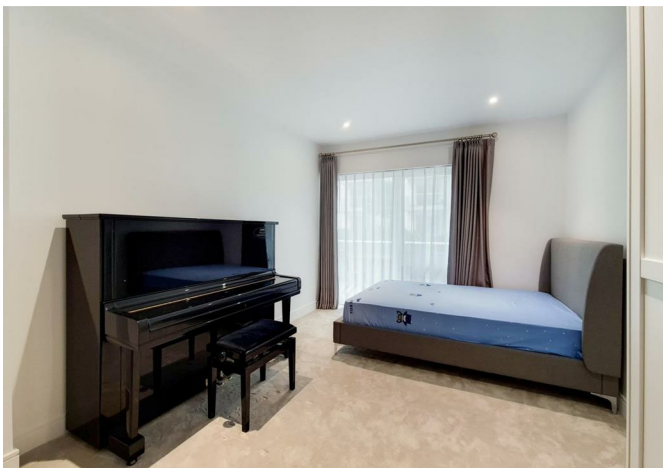




Faulkner House Tierney Lane, London, W6 9AE

£1,300,000



## Faulkner House Tierney Lane, London, W6 9AE

**£1,300,000**

This superb new build two bedroom flat is located on the ground floor of Faulkner House within the Fulham Reach riverside development.

The apartment comprises of two good size double bedrooms with fitted wardrobes, 2 bathrooms and fantastic storage space.

The fully integrated kitchen, and reception area leads onto the private patio which looks out towards the landscaped communal gardens.

The development benefits from a 24 hour concierge service, a private health and fitness centre with 15 metre swimming pool, sauna, steam room, treatment room, as well as a wine cellar.

There are shops, bars, restaurants within the development.

## Description



## Situation

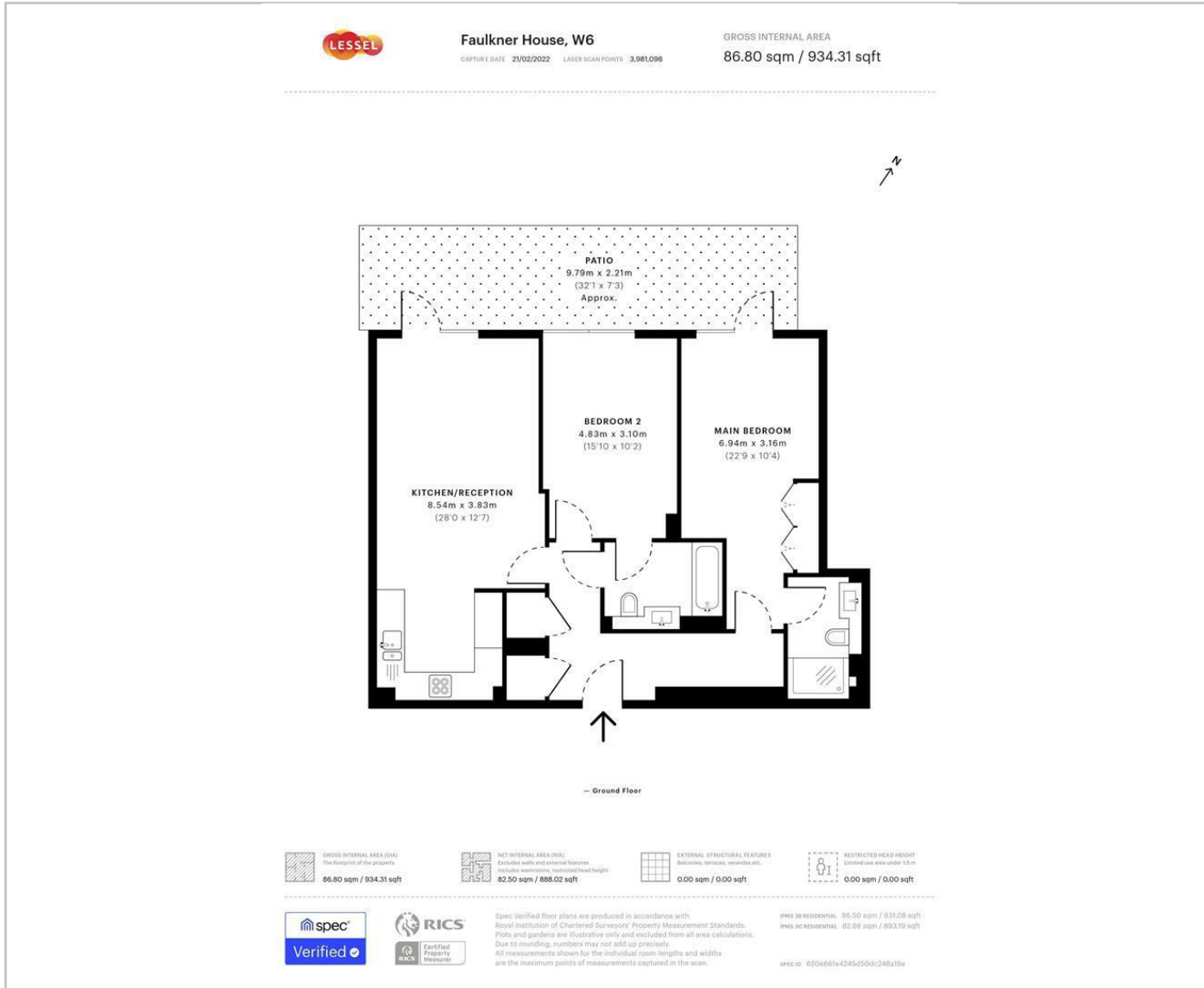


null

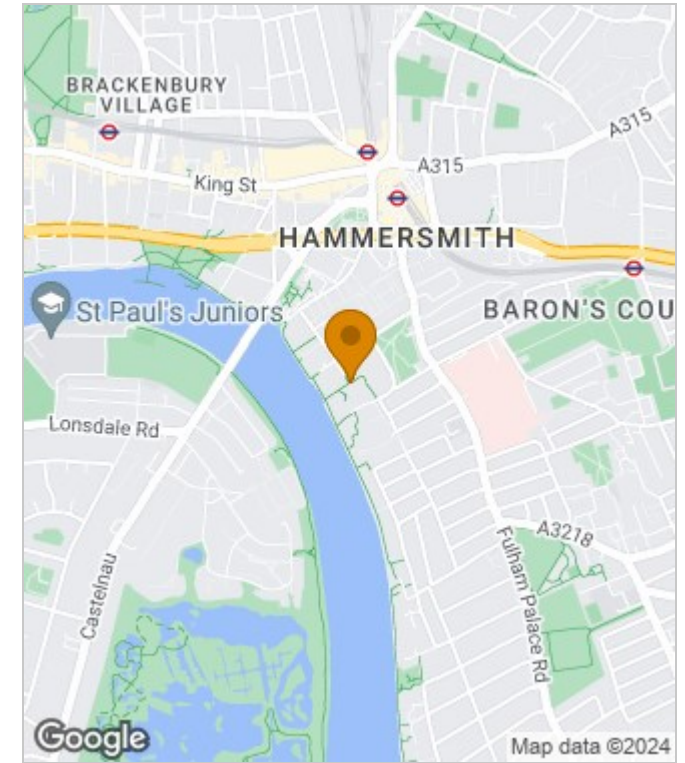
Council Tax Band:

Available:

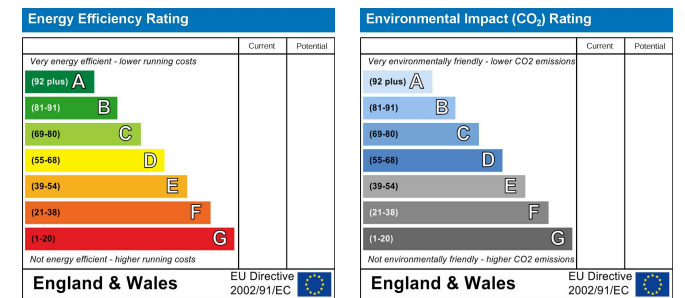
# Floor Plans



# Area Map



# Energy Performance Graph



These particulars, whilst believed to be accurate are set out as a general outline only for guidance and do not constitute any part of an offer or contract. Intending purchasers should not rely on them as statements of representation of fact, but must satisfy themselves by inspection or otherwise as to their accuracy. No person in this firm's employment has the authority to make or give any representation or warranty in respect of the property.