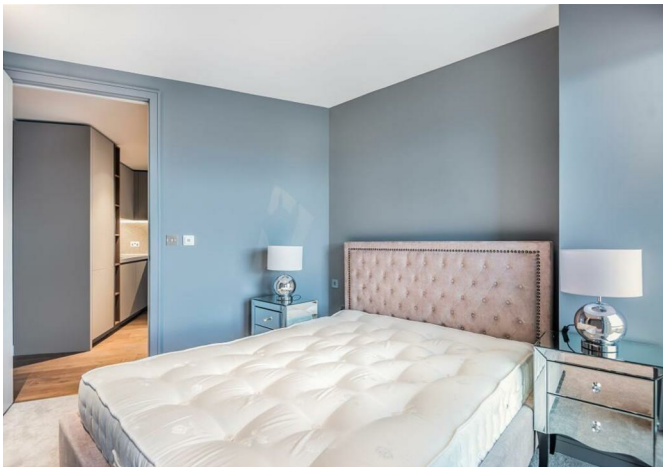




2 Cutter Lane, London, SE10 0PB
£620,000



2 Cutter Lane, London, SE10 0PB

£620,000

A stylish and spacious one bedroom home in Building 5, Upper Riverside neighbourhood. Residents enjoy full use of all the amenities on offer in all 5 buildings which include cascading roof terraces, a 15th floor swimming pool and spa, multiple gyms, cinemas, media room and more. The interiors that have been inspired by the river, the rich palette reflects the natural materials found on the water's edge. Floor to ceiling windows fill the home with natural light. The stained oak engineered wood floor with underfloor heating, complements the kitchen cabinetry and there is a very smart bathroom with porcelain wall and floor tiling.

Designed by world-famous architects SOM, the 5 prism towers along the riverfront are located 300m from North Greenwich bus and tube station, adjacent to the Emirates Air Line and opposite North Greenwich Pier, transport links are readily available. Greenwich Peninsula is a growing community wrapped by a mile and a half of the river. A community that's bustling with new restaurants, cafes and retail, here you'll find all the necessities of a contemporary lifestyle.

Description



Situation

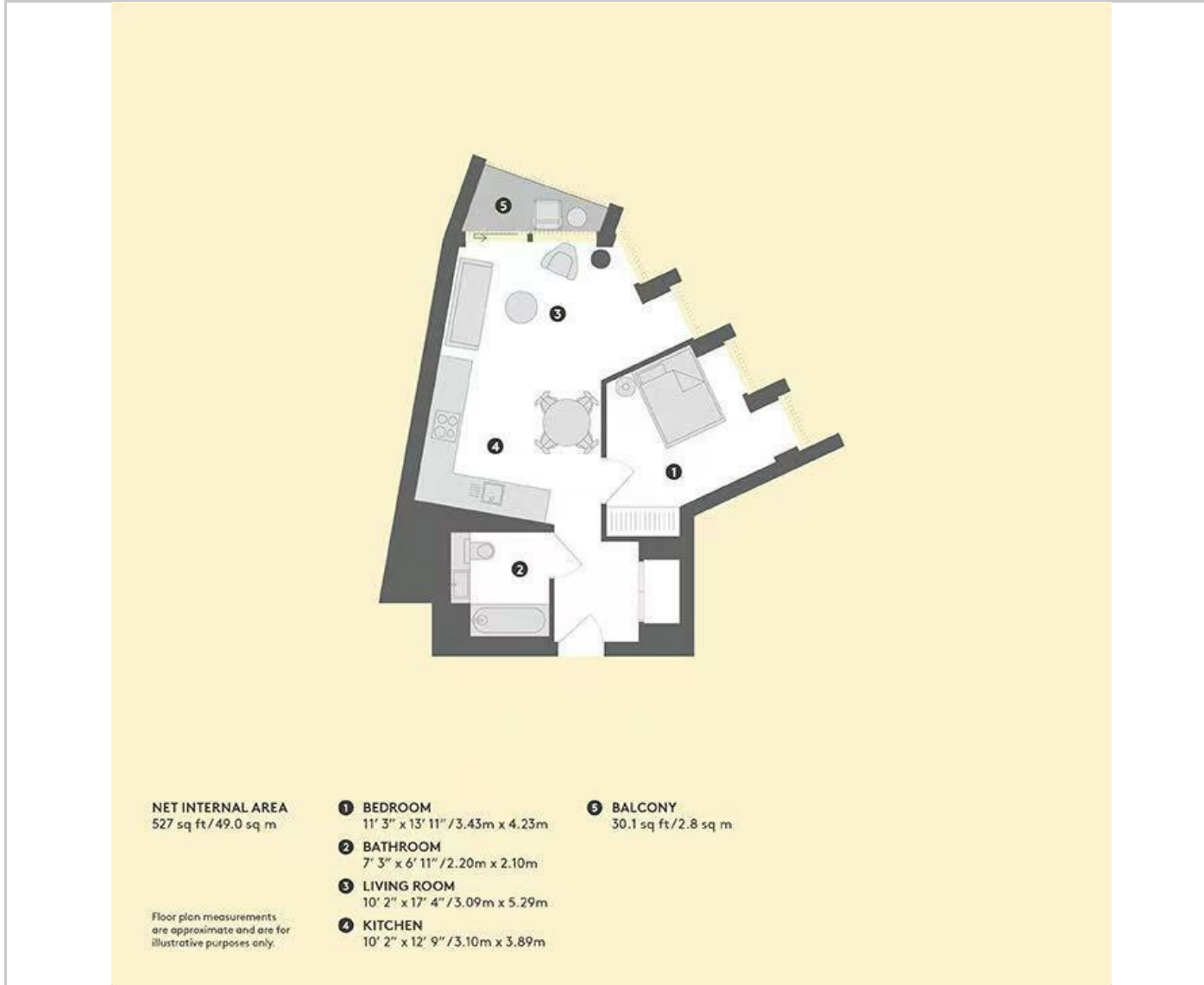


null

Council Tax Band:

Available:

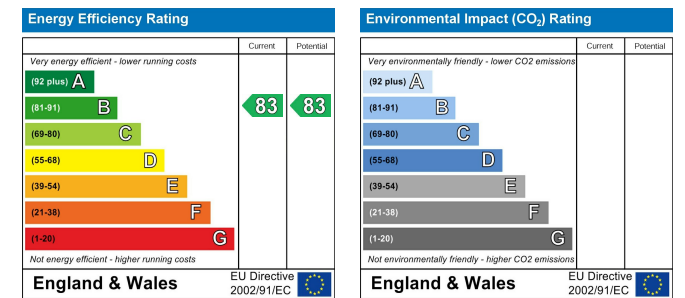
Floor Plans



Area Map



Energy Performance Graph



These particulars, whilst believed to be accurate are set out as a general outline only for guidance and do not constitute any part of an offer or contract. Intending purchasers should not rely on them as statements of representation of fact, but must satisfy themselves by inspection or otherwise as to their accuracy. No person in this firm's employment has the authority to make or give any representation or warranty in respect of the property.