



Jack Taggart & Co

RESIDENTIAL SALES AND LETTINGS

£600,000

King George VI Drive

Hove, BN3 6XF

PROPERTY SUMMARY

King George VI Drive is one of Hove's most desirable areas. Set back from Hove Park you are in the ideal location. This quiet residential area, close to Goldstone Valley has excellent facilities with local shops, parks and quaint cafes, as well as some of the area's most desirable schools.

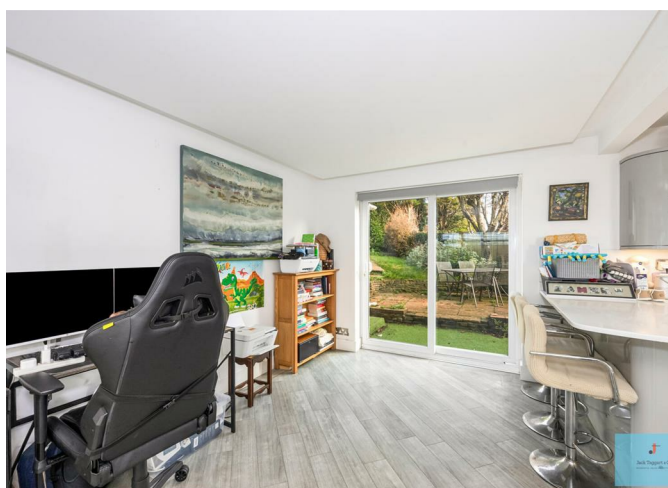
3



1




2







Energy Efficiency Rating		
	Current	Potential
Very energy efficient - lower running costs		
(92 plus) A		
(81-91) B		
(69-80) C		
(55-68) D		
(39-54) E		
(21-38) F		
(1-20) G		
Not energy efficient - higher running costs		
England & Wales		EU Directive 2002/91/EC 

Agents Note: Whilst every care has been taken to prepare these particulars, they are for guidance purposes only. All measurements are approximate and are for general guidance purposes only and whilst every care has been taken to ensure their accuracy, they should not be relied upon and potential buyers/tenants are advised to recheck the measurements