



Asher Way, E1W

£700,000

Welcome to this charming two-bedroom, split-level home in the sought-after Quay 430 development. The property benefits from a private balcony, a day porter, a long lease, and is offered on a chain-free basis.

Quay 430 is just a short walk from Tower Hill Station, providing excellent transport links across the City.

Features

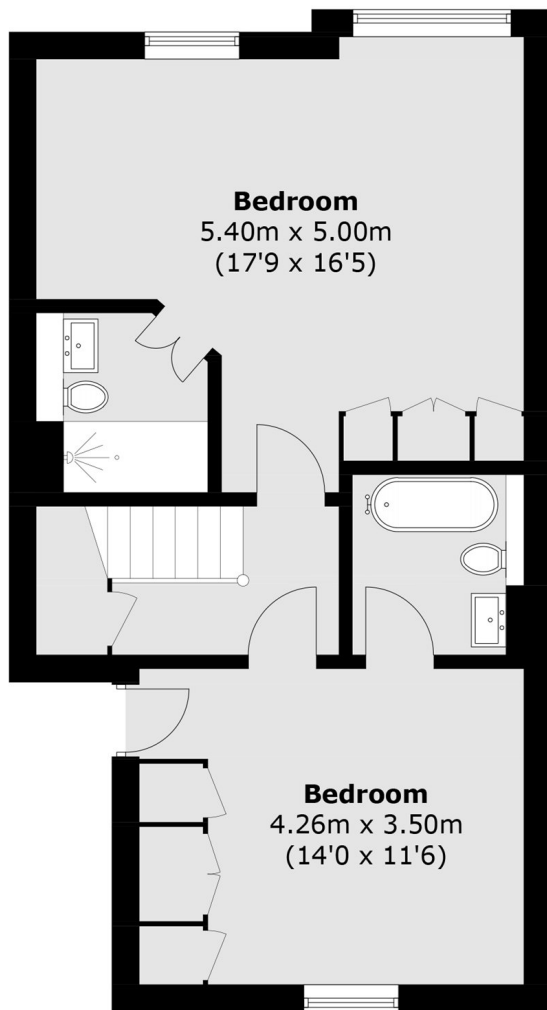
- Quay 430 Development
- Split Level
- Private Balcony
- Long Lease
- Chain Free
- Day Porter



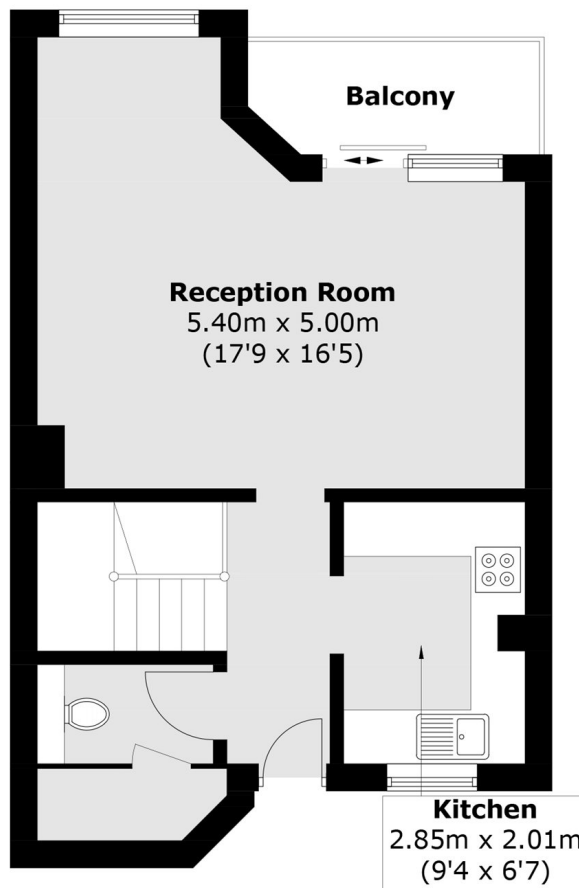
Asher Way, E1W



Asher Way, London, E1W



Third Floor



Fourth Floor

Total area (approx.): 92.1 sq. m (991.4 sq. ft)
Balcony: 3.9 sq. m (42.0 sq. ft)