



Milk Yard, E1W

£525,000

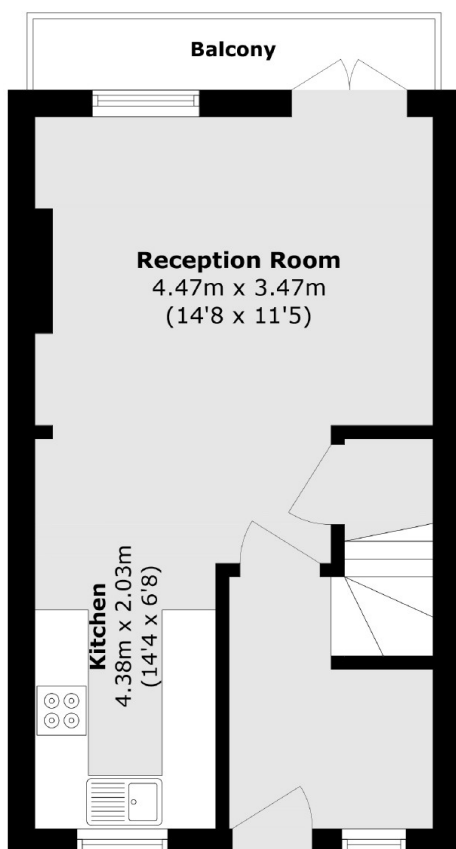
Welcome to this well-presented two-bedroom home, situated within the highly sought-after Milk Yard development. Benefits include allocated parking, a daytime porter, a private balcony, and full renovation throughout.

Milk Yard is ideally located just 0.3 miles from Wapping Overground Station, providing excellent transport links across the City.

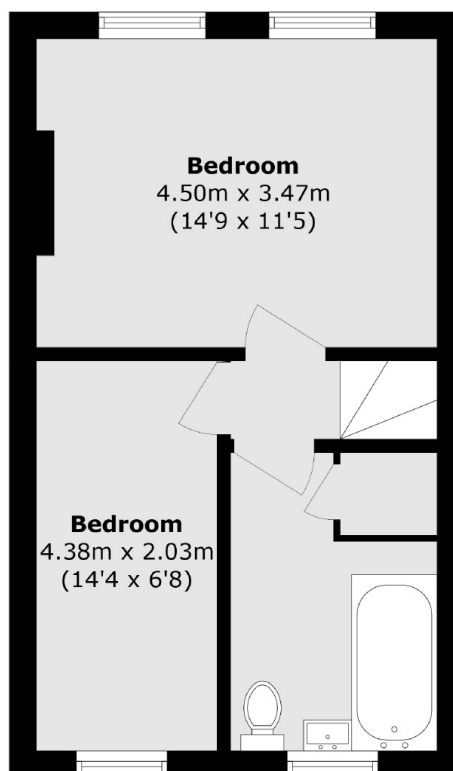
Features

- Spilt level
- Allocated Parking
- Private Balcony
- Long Lease
- Day Porter
- Renovated Throughout

Milk Yard, London, E1W



Second Floor



Third Floor

Total area (approx.): 71.8 sq. m (772.9 sq. ft)

Balcony (approx.): 3.6 sq. m (38.8 sq. ft)