



Commercial Road, E14

£530 Per week

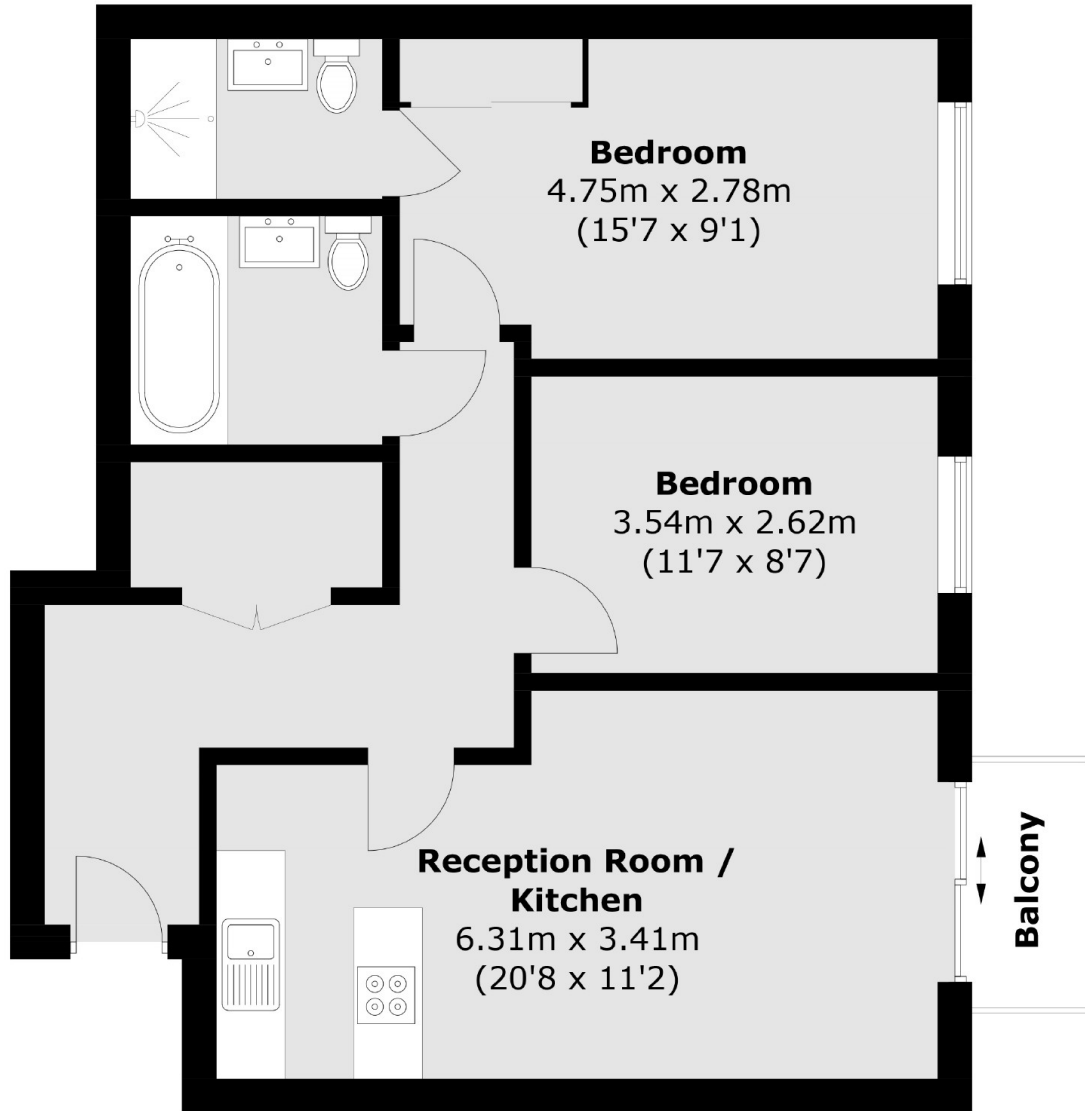
A bright two bedroom apartment in Tequila Wharf. The property has an open plan living space, two double bedrooms, wooden flooring throughout and a private balcony with canal views.

Tequila Wharf is located in Limehouse, moments from an array of shops, bars and restaurants including the popular Narrow.

Features

- Two Bedrooms
- Two Bathrooms
- Concierge
- Furnished
- Private Balcony
- Canal Views

Commercial Road, London, E14



Total area (approx.): 65.6 sq. m (706.1 sq. ft)
Balcony area (approx.): 2.1 sq. m (22.6 sq. ft)

Dexters

Wapping
123 Wapping High Street
London
E1W 3NX
Lettings
020 7650 5351

Energy Rating: B. We aim to make our particulars both accurate and reliable. However they are not guaranteed; nor do they form part of an offer or contract. If you require clarification on any points then please contact us, especially if you're traveling some distance to view. Please note that appliances and heating systems have not been tested and therefore no warranties can be given as to their good working order.

 **RICS** | Regulated
Estate Agent
and Letting Agent

dexters.co.uk