



## Bridewell Place, E1W

£280 Per week

This One bedroom apartment is on the first floor and comprises open plan living room with sofa bed and views along a cobbled Victorian style lane. Features include fitted kitchen, washer/dryer, Separate bathroom, double bedroom and allocated parking space.

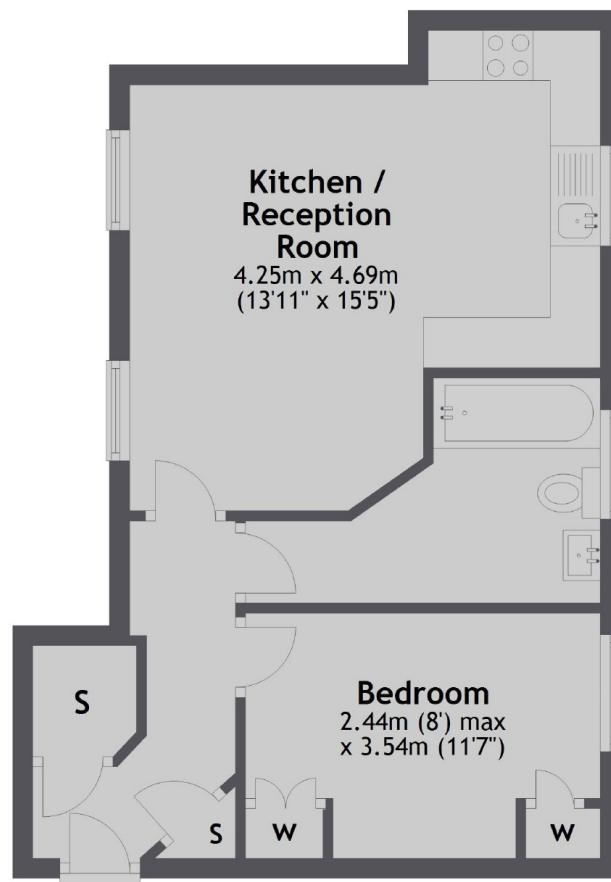
Situated off Wapping Lane approx 0.2 miles from Wapping Overground Station.

### Features

- One Bedroom Apartment
- First Floor
- Day Porter
- Parking
- Furnished
- Secure Development

## Bridewell Place, London, E1W

### First Floor



Total area: approx. 39.1 sq. metres (421.0 sq. feet)

### Contact

To arrange a viewing call our office on the number below or visit our website.



Energy Rating: D. We aim to make our particulars both accurate and reliable. However they are not guaranteed; nor do they form part of an offer or contract. If you require clarification on any points then please contact us, especially if you're traveling some distance to view. Please note that appliances and heating systems have not been tested and therefore no warranties can be given as to their good working order.