



Commercial Road, E14

£475,000

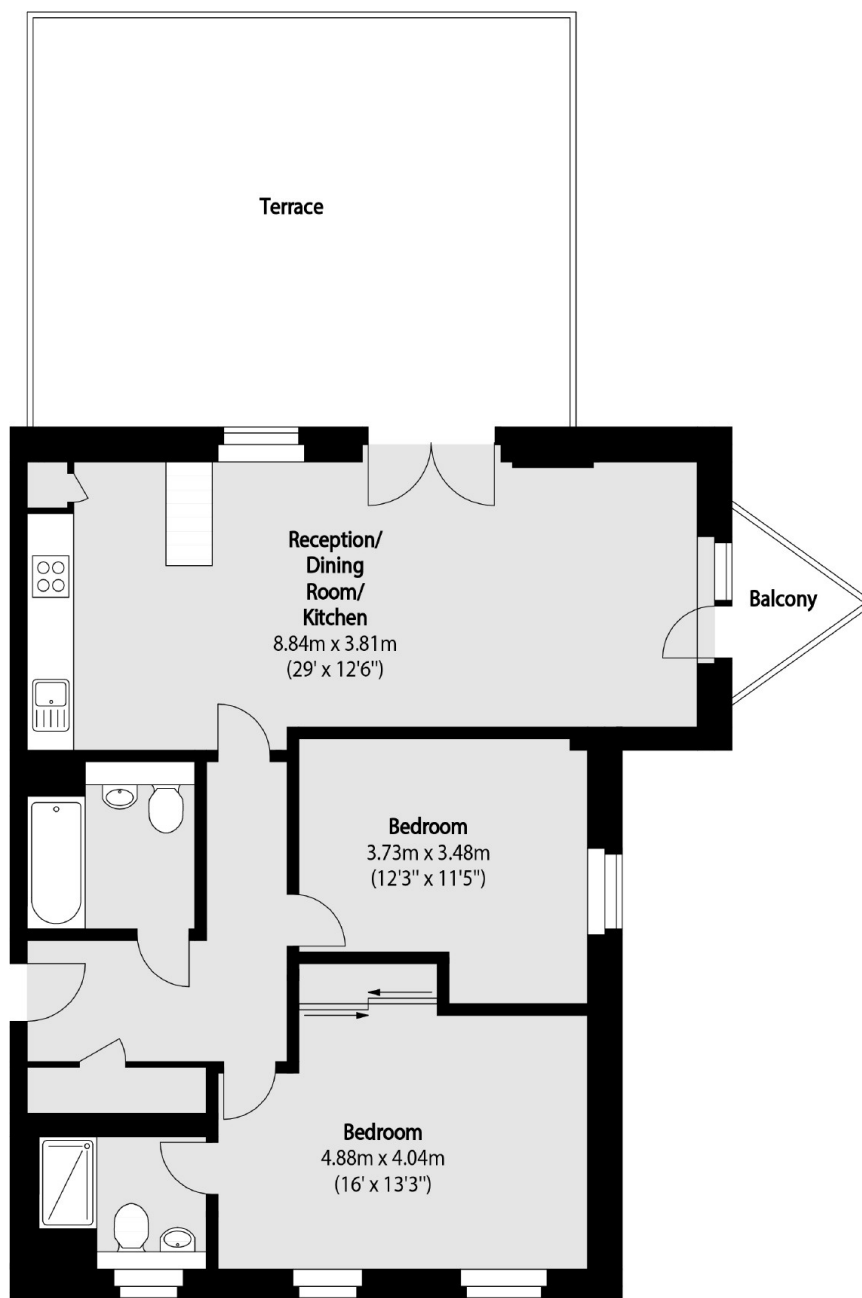
Offered to the market on a chain free basis is this two bedroom home with an incredible private terrace. The property includes an additional private balcony, moments from the DLR station and an allocated parking space.

Commercial Road is 60 feet from Limehouse DLR station offering great links into the City and Canary Wharf.

Features

- 900 Square Feet
- Large Private Terrace
- Allocated Parking Space
- Chain Free
- Additional Balcony
- Two Double Bedrooms

Commercial Road, London, E14



Total area (approx): 83.61 sq m (900 sq. ft)

Terrace/ Balcony total area (approx): 40.59 sq m (437 sq. ft)

Dexters

Wapping
123 Wapping High Street
London
E1W 3NX
Sales
020 7650 5350

Energy Rating: C. We aim to make our particulars both accurate and reliable. However they are not guaranteed; nor do they form part of an offer or contract. If you require clarification on any points then please contact us, especially if you're traveling some distance to view. Please note that appliances and heating systems have not been tested and therefore no warranties can be given as to their good working order.

 **RICS** | Regulated
Estate Agent
and Letting Agent

[dexters.co.uk](https://www.dexters.co.uk)