



Fowey Close, E1W

£876 Per week

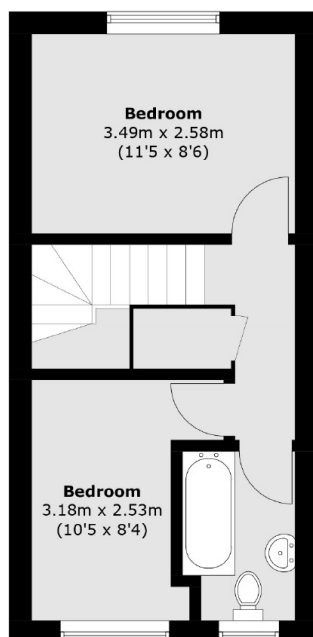
A four bedroom house split over three levels on Fowey Close. This property has an open plan living room leading to a private garden, four double bedrooms, two bathrooms and comes furnished.

Fowey Close is in the heart of Wapping, moments from an array of shops, bars and restaurants including the popular St Katharine Docks.

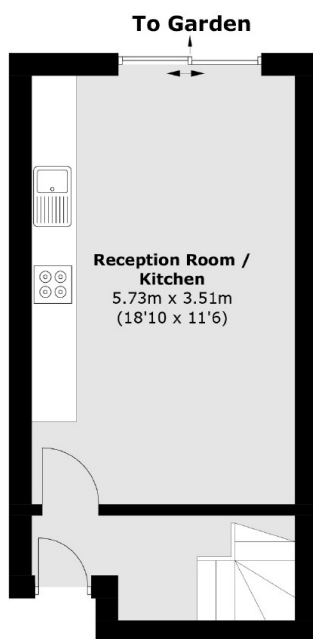
Features

- Four Double Bedrooms
- Two Bathrooms
- Split Over Three Levels
- Furnished
- Spacious
- Private Garden

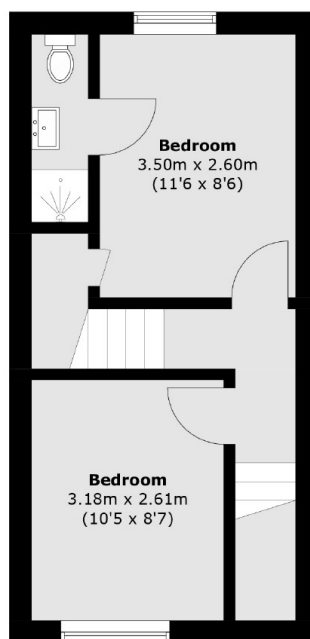
Fowey Close, London, E1W



Second Floor



Ground Floor



First Floor

Total area (approx.): 79.7 sq. m (857.7 sq. ft)