



## Ratcliffe Cross Street, E1

£475,000

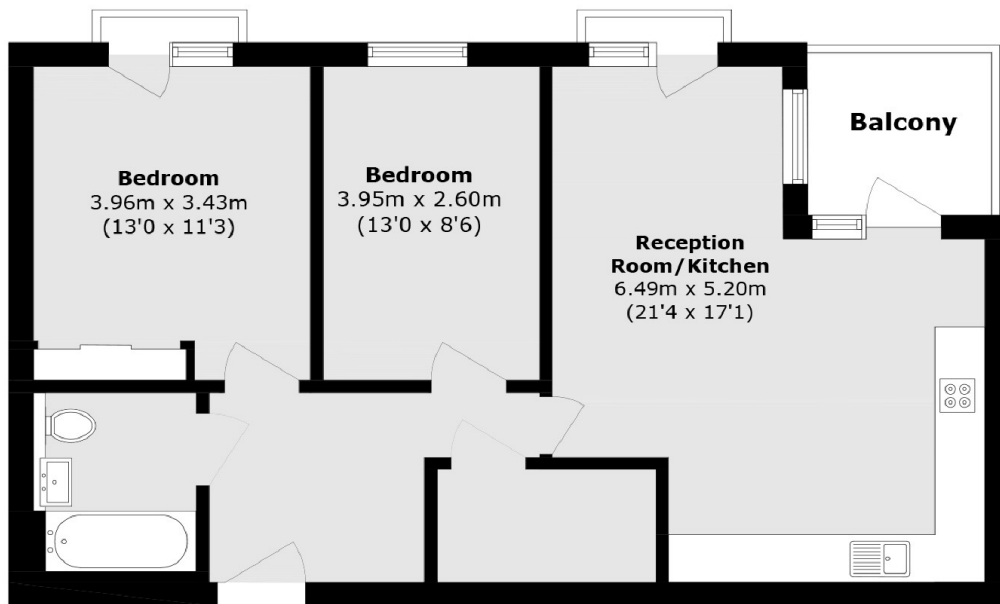
Welcome to this charming two bedroom home moments away from Limehouse DLR station. The property also includes a long lease, private balcony, large communal garden, and bike storage.

The Kiln Works is just 0.2 miles from Limehouse DLR station, offering great links into the City and Canary Wharf.

### Features

Modern Throughout  
Two Double Bedrooms  
Long Lease  
Private Balcony  
Communal Garden  
Bike Storage

# Ratcliffe Cross Street, London, E1



Total area (approx.): 68.9 sq. m (741.6.0 sq. ft)

Balcony area (approx.): 4.4 sq. m (47.3.0 sq. ft)