



Maynards Quay, E1W

£550,000

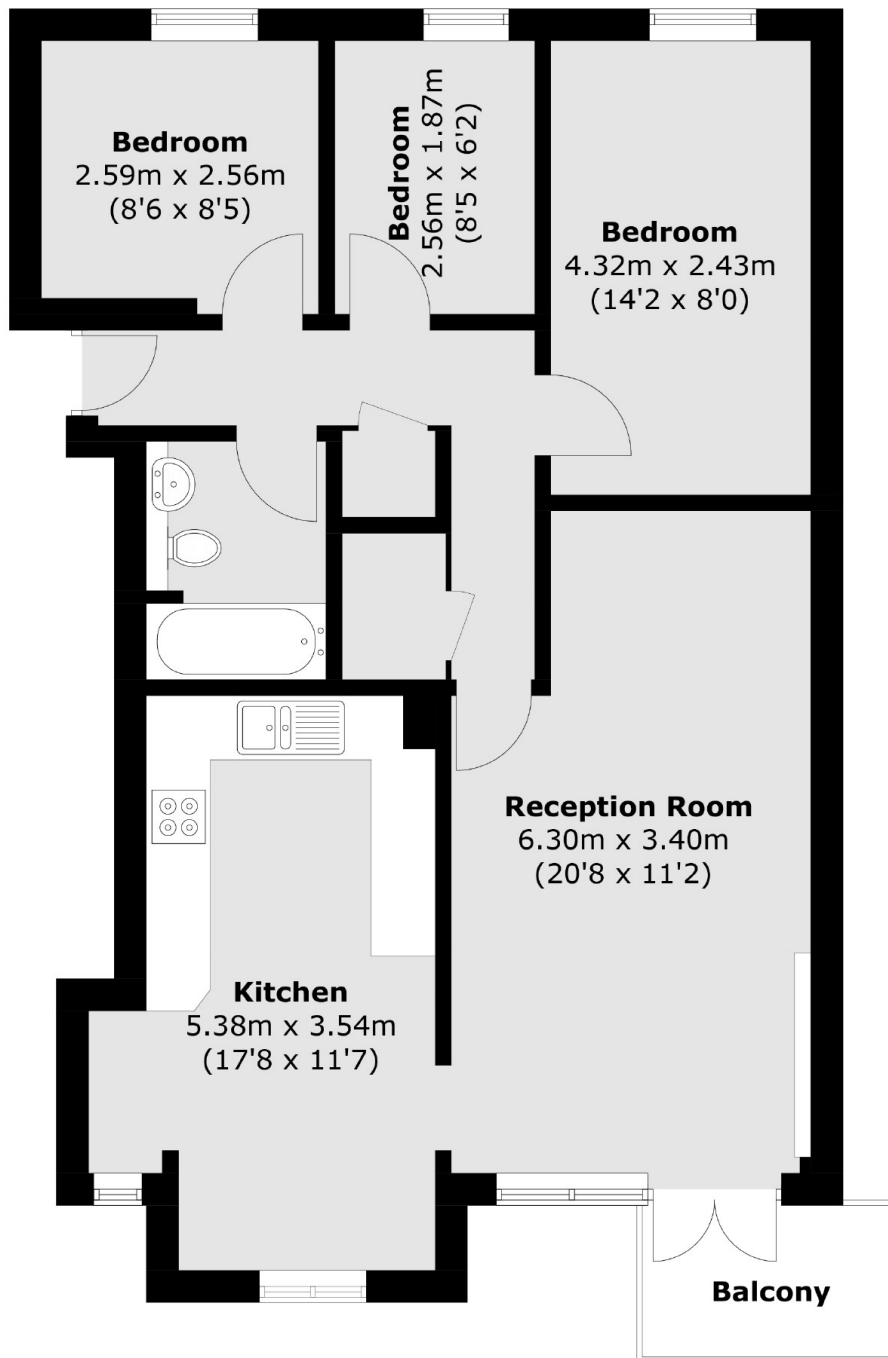
Offering water views with Canary Wharf in the distance, this three-bedroom home is situated within a gated development. The property includes a private balcony and is offered with no onward chain.

Maynards Quay is between Shadwell DLR Station and Wapping Overground station which both offer good links to the City and Canary Wharf.

Features

- 775 Square Feet
- Private Balcony
- Basin And Canary Wharf Views
- No Onward Chain
- Three Bedrooms
- Allocated Parking

Maynards Quay, London, E1W



Total area (approx.): 72.0 sq. m (775.0 sq. ft)
Balcony: 3.4 sq. m (36.5 sq. ft)

Dexters

Wapping
123 Wapping High Street
London
E1W 3NX
Sales
020 7650 5350

Energy Rating: . We aim to make our particulars both accurate and reliable. However they are not guaranteed; nor do they form part of an offer or contract. If you require clarification on any points then please contact us, especially if you're traveling some distance to view. Please note that appliances and heating systems have not been tested and therefore no warranties can be given as to their good working order.

 **RICS** | Regulated
Estate Agent
and Letting Agent

dexters.co.uk