



## Barleycorn Way, E14

### £350,000

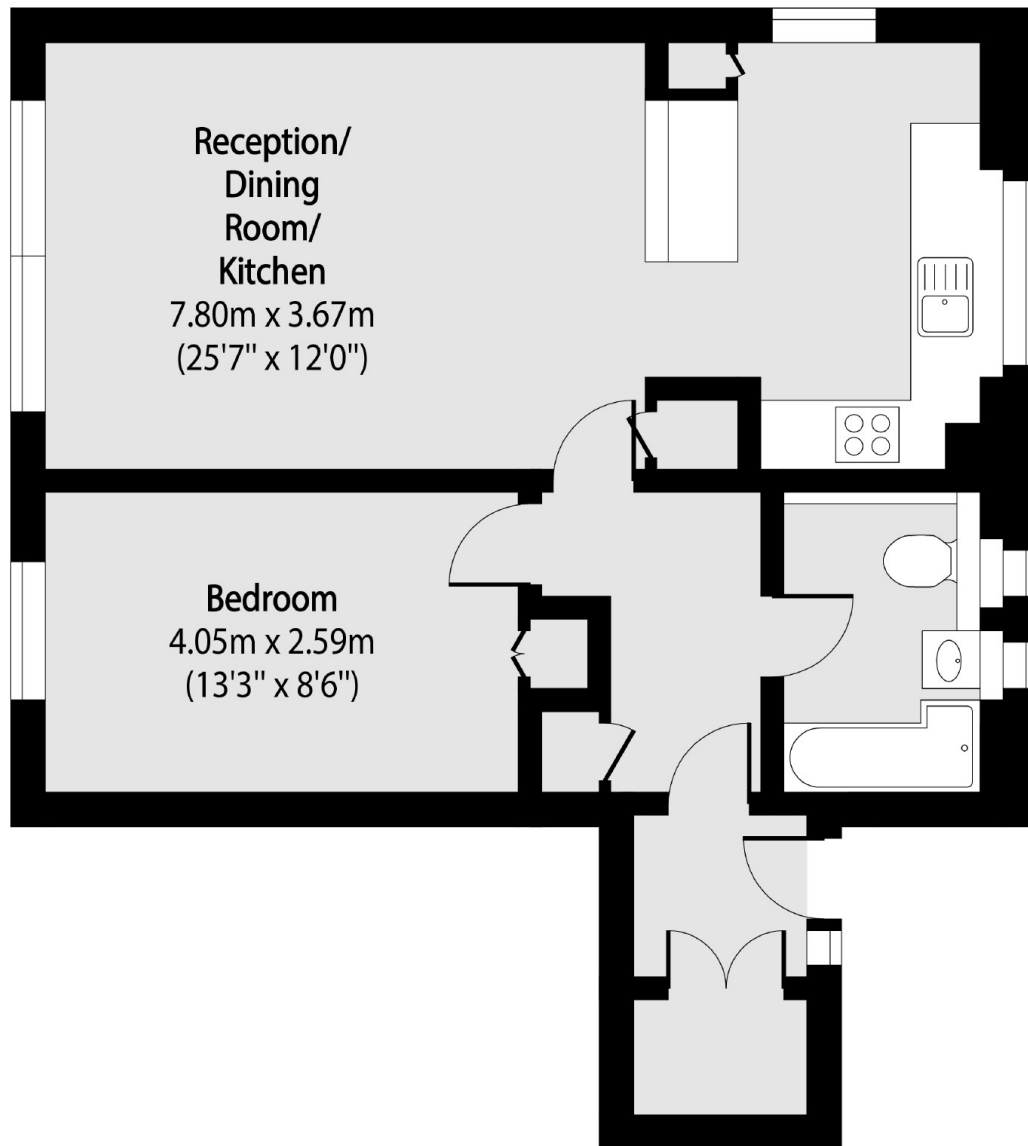
Offered to the market on a chain free basis is this large one bedroom newly refurbished home. Features to include refitted kitchen, re-fitted bathroom, low ground rent , ideally located for Canary Wharf and no onward chain.

Limehouse DLR station is just 0.4 miles from Barleycorn Way which offers great links into Canary Wharf and the City.

### Features

- 616 Square Feet
- Recently Refurbished
- Chain Free
- Low Ground Rent
- Narrow Street Location
- Dual Aspect

Barleycorn Way,  
London, E14



Total area (approx): 57.21 sq m (616 sq. ft)

**Dexters**

Wapping  
123 Wapping High Street  
London  
E1W 3NX  
Sales  
020 7650 5350

Energy Rating: . We aim to make our particulars both accurate and reliable. However they are not guaranteed; nor do they form part of an offer or contract. If you require clarification on any points then please contact us, especially if you're traveling some distance to view. Please note that appliances and heating systems have not been tested and therefore no warranties can be given as to their good working order.

 **RICS** | Regulated  
Estate Agent  
and Letting Agent

[dexters.co.uk](https://www.dexters.co.uk)