



Watts Street, E1W

£450,000

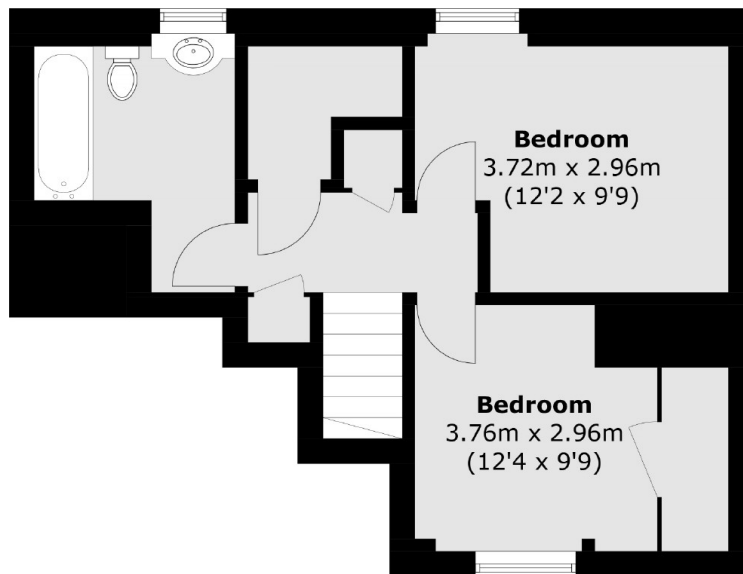
Welcome to this split level two bedroom home located within the Green Bank Estate. The property includes wooden flooring, dual aspect reception room, low ground rent and is offered on a chain free basis.

Green Bank Estate is 0.1 mile from Wapping Overground Station which provides good links to the Jubilee Line and The City. Sainsburys Local and various river fronted pubs are also on your door step.

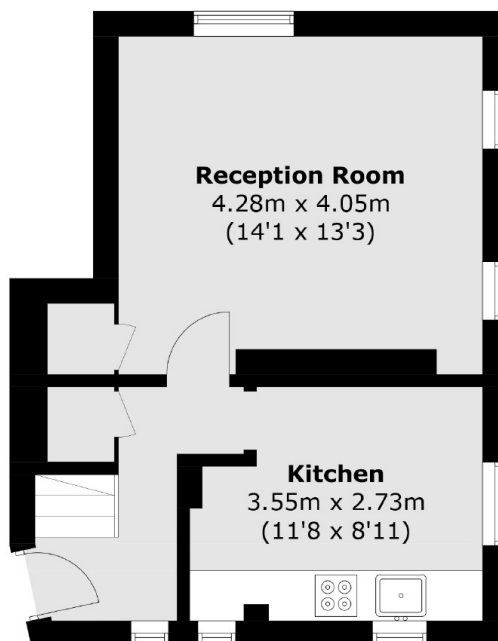
Features

- 1920's Mansion Block
- Split Level
- Two Double Bedroom
- Dual Aspect
- Low Ground Rent
- Chain Free

Watts Street,
London, E1W



Fourth Floor



Third Floor

Total area (approx.): 71.4 sq. m (768.6 sq. ft)