



Basin Approach, E14

£650,000

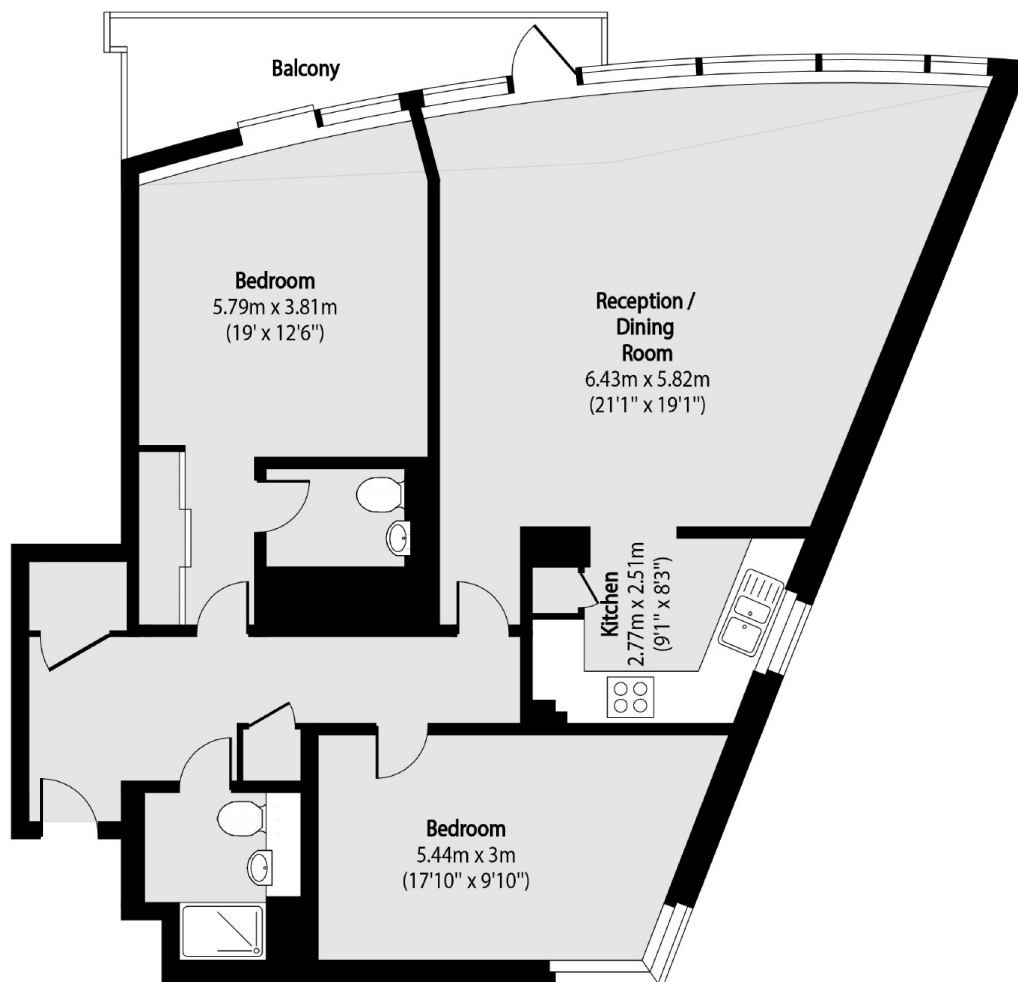
Welcome to this Marina facing apartment, offering over 900 Square Feet. The property also includes a private balcony, 24 hour concierge, allocated parking space and wooden flooring throughout.

Basin Approach is ideally located close to the amenities of both Limehouse and Wapping, as well as being in close proximity to Canary Wharf. Excellent transport links to the city are available via Limehouse DLR Station.

Features

- Marina Facing
- Private Balcony
- 24 Hour Concierge
- Allocated Parking
- Two Bedrooms
- Two Bathrooms

Basin Approach, London, E14



Total area (approx): 105.34 sq m (1134 sq. ft)

Balcony total area (approx): 7.06 sq m (76 sq. ft)

Dexters

Wapping
123 Wapping High Street
London
E1W 3NX
Sales
020 7650 5350

Energy Rating: D. We aim to make our particulars both accurate and reliable. However they are not guaranteed; nor do they form part of an offer or contract. If you require clarification on any points then please contact us, especially if you're traveling some distance to view. Please note that appliances and heating systems have not been tested and therefore no warranties can be given as to their good working order.

 **RICS** | Regulated
Estate Agent
and Letting Agent

[dexters.co.uk](https://www.dexters.co.uk)