



Hainton Close, E1

£749,000

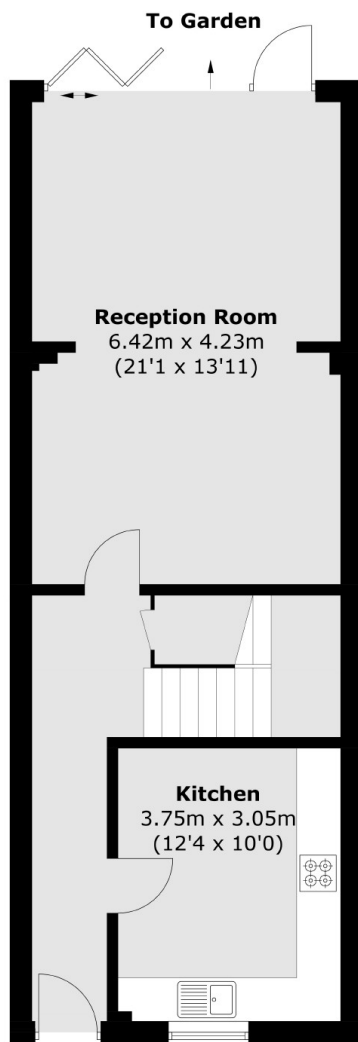
Welcome to this charming and generously proportioned three-bedroom two-bathroom freehold house, offering over 1,200 square feet of living space. The property also includes a west-facing garden, residents' permit parking, re-fitted kitchen, and the property is offered for sale on a chain-free basis.

Hainton Close is located just 0.2 miles from Shadwell DLR and Overground station, offering excellent links to Canary Wharf and the City. In addition,

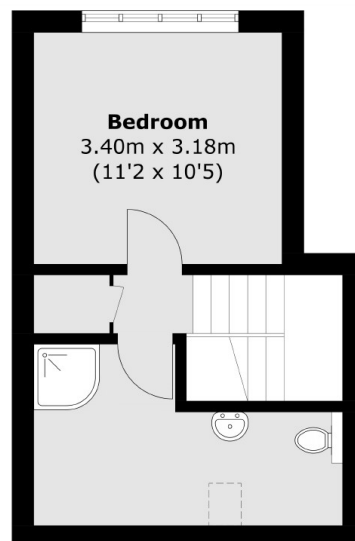
Features

- Three Double Bedrooms
- West Facing Garden
- Resident Parking Permit
- Chain Free
- 1,200 Square Feet
- Re-Fitted Kitchen

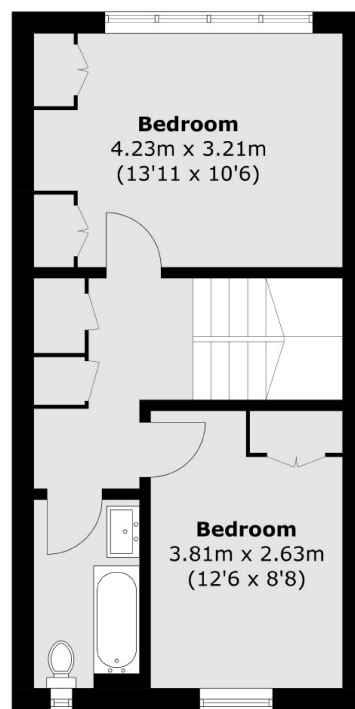
Hainton Close, London, E1



Ground Floor



Second Floor



First Floor

Total area (approx.): 118.0 sq. m (1,270.2 sq. ft)