



Swedenborg Gardens, E1

£275,000

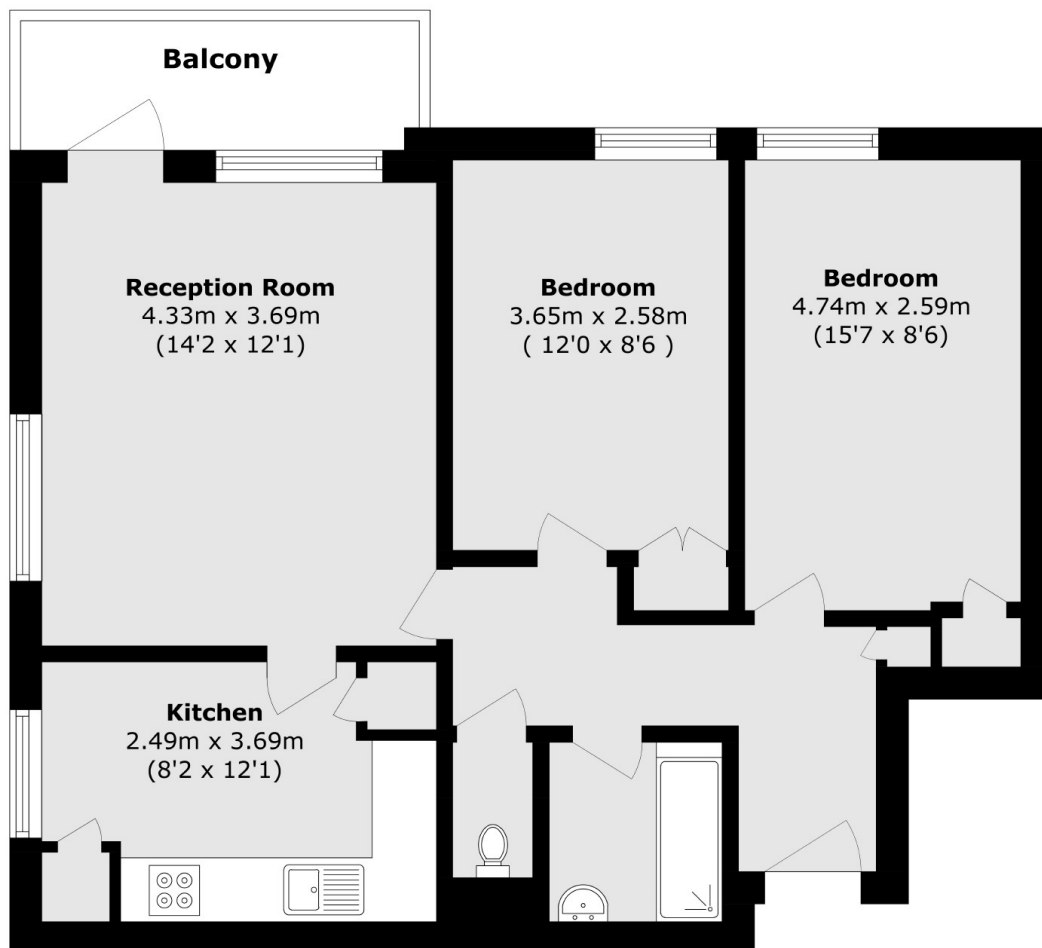
Offered to the market on a chain-free basis is this charming two-bedroom home with spectacular city views. Additional features include private outdoor space and a secure entry phone system.

Shadwell DLR and Overground Station is just 0.3 miles from Swedenborg Gardens, offering excellent links to the City and Canary Wharf.

Features

- Two Bedrooms
- 650 Square Feet
- Chain Free
- Secure Entry Phone System
- City Views
- Private Outside Space

Swedenborg Gardens, London, E1



Total area (approx.): 60.4 sq. m (650.1 sq. ft)
Balcony area (approx.): 4.4 sq. m (47.3 sq. ft)