



## Prusom Street, E1W

### £400,000

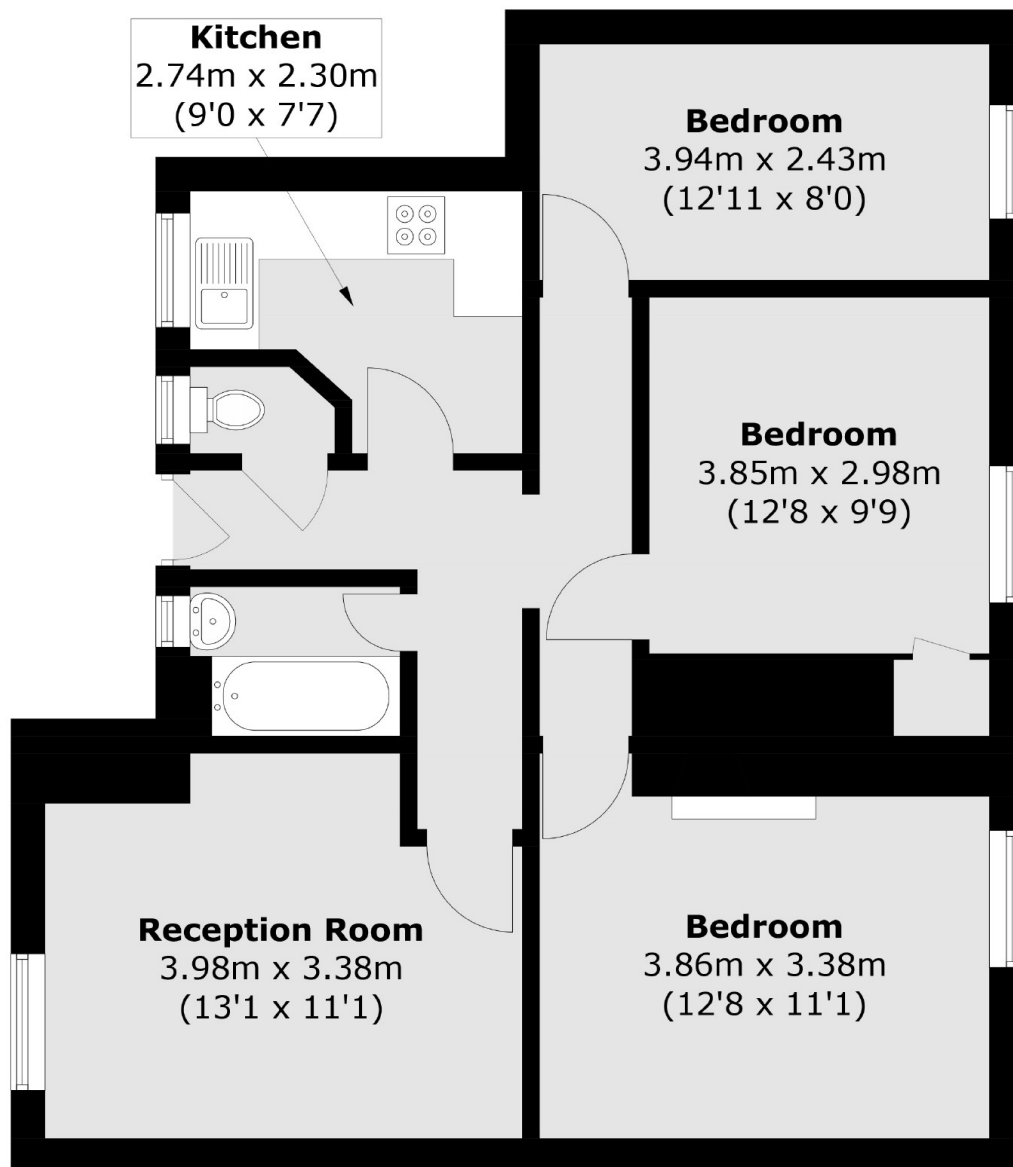
A brick built, low rise three bedroom home within 1920's mansion block located in central Wapping. Feature to include three bedrooms, separate WC, low service charge and ground rent, offered to the market on a chain free basis.

Ross House Is a quaint development ideally situated for transport links from Wapping Overground Station and a wide variety of local amenities including private coffee houses and riverside restaurants.

### Features

- Third Floor
- Three Bedrooms
- Low Service Charge
- Low Ground Rent
- In Need Of Modernisation

# Prusom Street, London, E1W



Total area (approx.): 67.1 sq. m (722.3 sq. ft)

## Dexters

Wapping  
123 Wapping High Street  
London  
E1W 3NX  
Sales  
020 7650 5350

Energy Rating: C. We aim to make our particulars both accurate and reliable. However they are not guaranteed; nor do they form part of an offer or contract. If you require clarification on any points then please contact us, especially if you're traveling some distance to view. Please note that appliances and heating systems have not been tested and therefore no warranties can be given as to their good working order.

 **RICS** | Regulated  
Estate Agent  
and Letting Agent

[dexters.co.uk](https://www.dexters.co.uk)