



## Pitsea Street, E1

£375,000

A three-bedroom split-level property, well located for the City and Canary Wharf. The property has a private balcony, secure entry phone system, and lift access

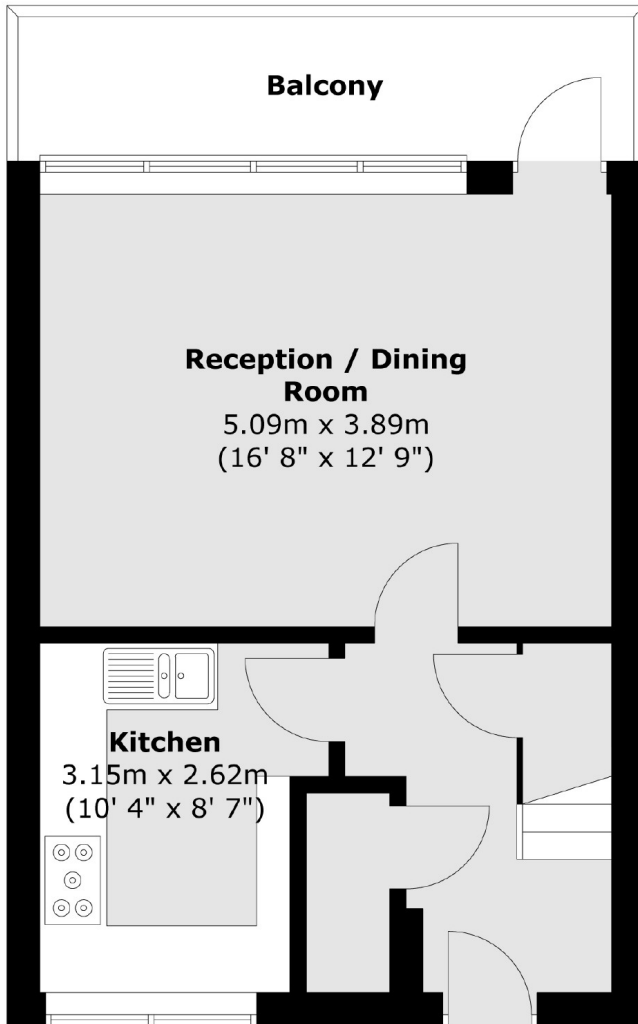
Corringham House is located within walking distance of both Shadwell DLR Station and Limehouse DLR, both offering excellent links to the City and Canary Wharf.

### Features

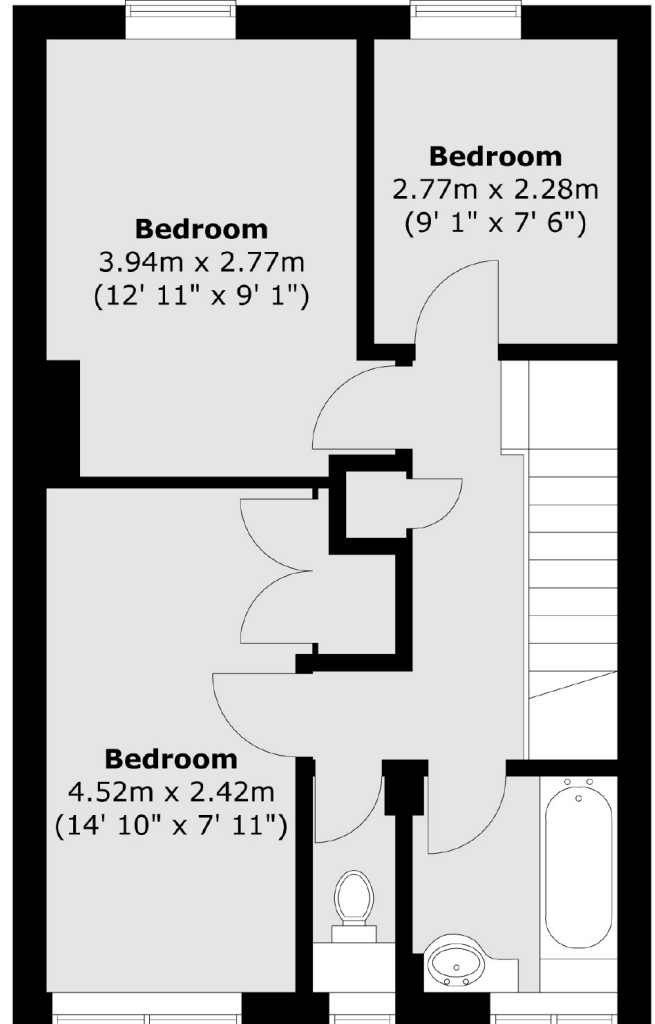
- 879 Sq.Ft
- Split Level
- Three Bedrooms
- Separate WC
- E1 Location

# Pitsea Street, London, E1

## Second Floor



## Third Floor



Total area (approx.) : 81.7 sq. m (879 sq. ft)  
Total balcony area (approx.) : 7.2 sq. m (77 sq. ft)