



New Crane Place, E1W

£1,500 Per week

A unique three bedroom property in New Crane Wharf. This spacious well furnished property is set over 2300 sq/ft, with three double bedrooms, three bathrooms, a large reception room, separate fitted kitchen with utility room, wooden floors and a cinema room for extra entertainment. Overlooking the private courtyard and features include 24 concierge service and secure underground parking.

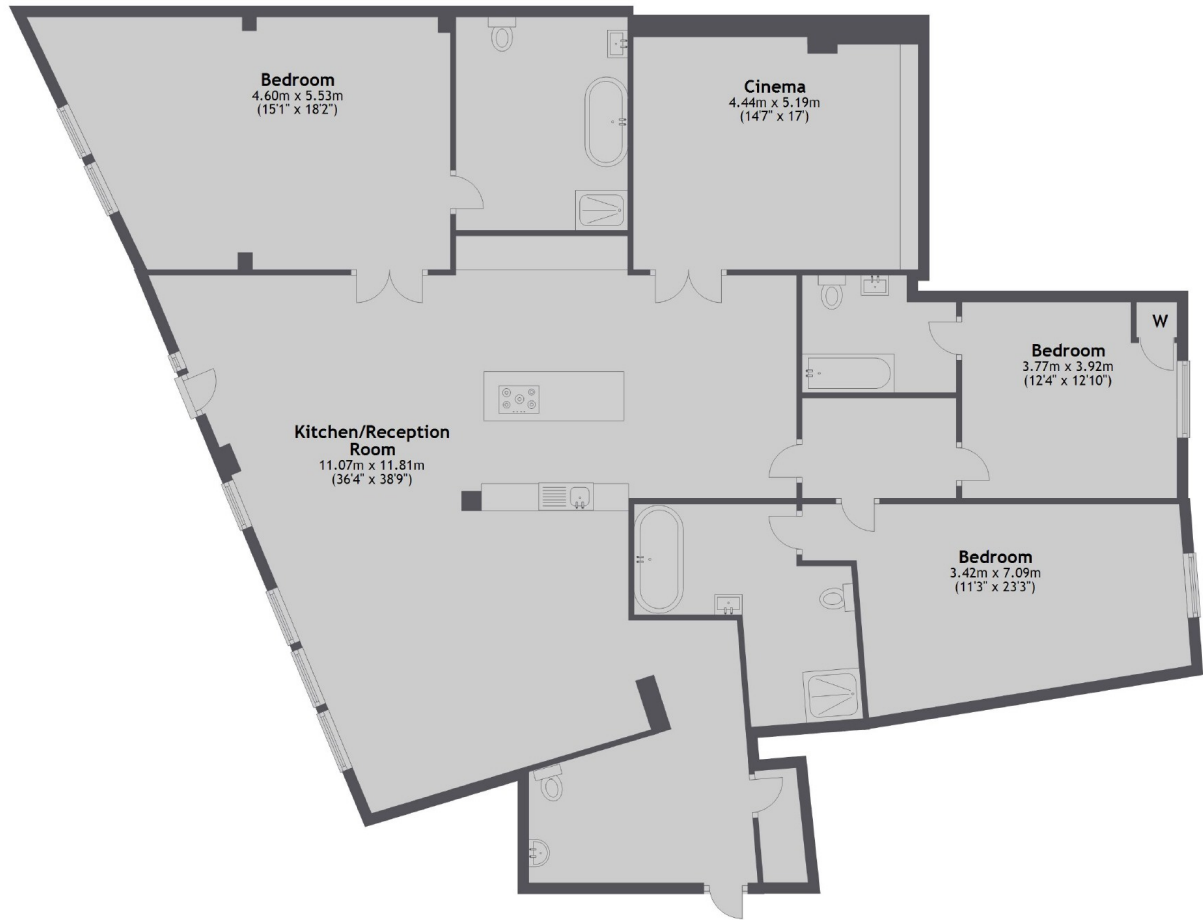
Located in central Wapping, very close to Wapping overground station for easy access in to Canary Wharf, The City and the West End. There are a number of small shops and restaurants close by and the large Waitrose supermarket is by St Katharine Dock's.

Features

- Three Double Bedrooms
- Three Bathrooms
- Over 2300 sq/ft
- Cinema Room
- Original Features Throughout
- Underground Parking

New Crane Place, London, E1W

Ground Floor



Total area: approx. 239.4 sq. metres (2577.1 sq. feet)