



Watney Street, E1

£360,000

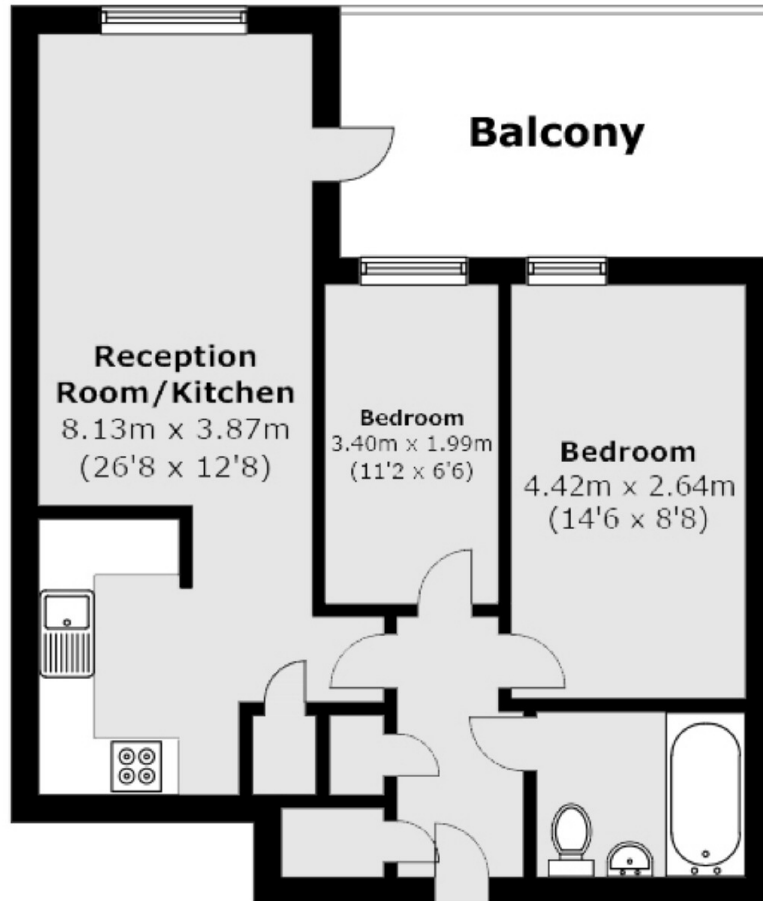
A two bedroom apartment with a large private balcony. The property has a reception room with floor to ceiling windows, 24 hour security and lift access.

Hannah Building is located in E1 and is 0.1 miles from Shadwell DLR and overground Station which offers good links to The City and Canary Wharf.

Features

- Two Double Bedrooms
- Large Private Balcony
- Lift Access
- Great Location
- Chain Free
- 24 Hour Security

Watney Street, London, E1



Total area (approx.): 53.39 sq. m (574.6 sq. ft)
Balcony area (approx.): 11.89 sq. m (127.9 sq. ft)