



Wharf Lane, E14

£400,000

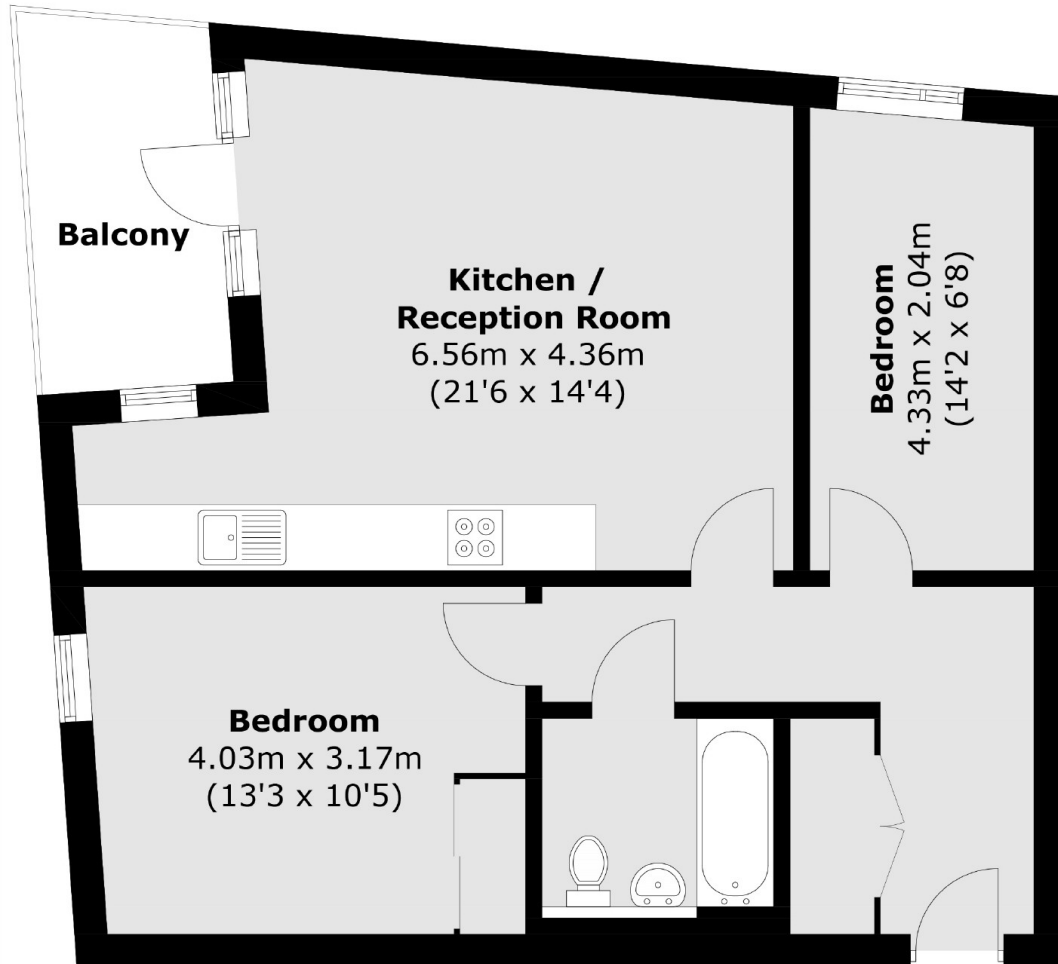
A two double bedroom home located by the The Rectory Garden and Limehouse Cut. The property is in good condition and features an open plan reception room with access to private balcony and secure entry system.

Earl Attlee Court is 0.3 miles to Limehouse DLR Station which offers good links to Canary Wharf and The City. The Rectory Garden, Nicholas Hawksmoor's St Anne's Church and the Limehouse Cut surround the development.

Features

- Open Plan Reception
- Private Balcony
- 665 Sq.Ft
- Lift Access
- Secure Entry System

Wharf Lane, London, E14



Total area (approx.): 61.8 sq. m (665.2 sq. ft)
Balcony area (approx.): 5.9 sq. m (63.5 sq. ft)