

Dock Street, E1

£553 Per week

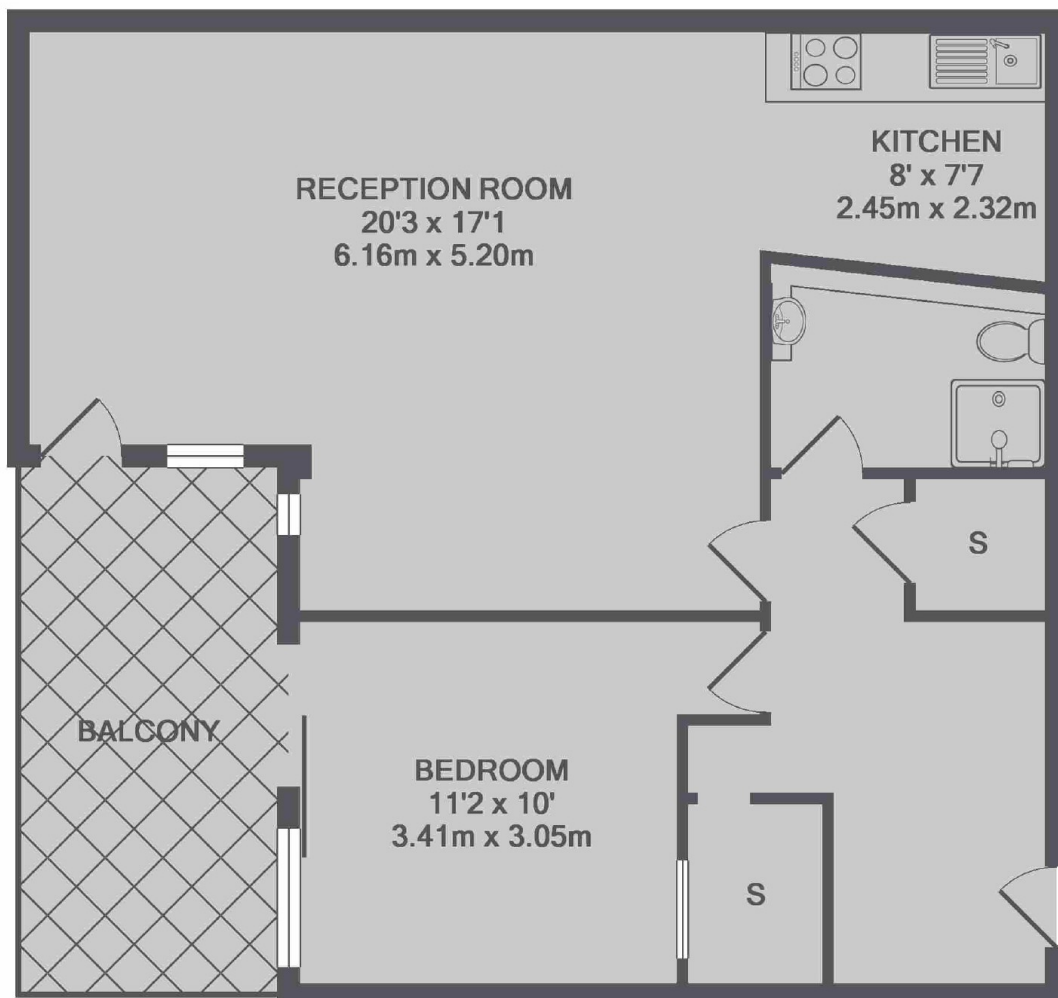
A spacious one bedroom apartment in a modern Wapping development. The property has a semi open plan living space, wooden flooring and a private balcony.

Dock Street is in the heart of Wapping, moments from an array of shops, bars and restaurants including the popular St Katharine Docks.

Features

- One Bedroom
- One Bathroom
- Floor To Ceiling Windows
- Recently Refurbished
- Private Terrace
- Wooden Flooring

Dock Street,
London, E1



TOTAL APPROX. FLOOR AREA 699 SQ.FT. (64.9 SQ.M.)