



Jardine Road, E1W

£400,000

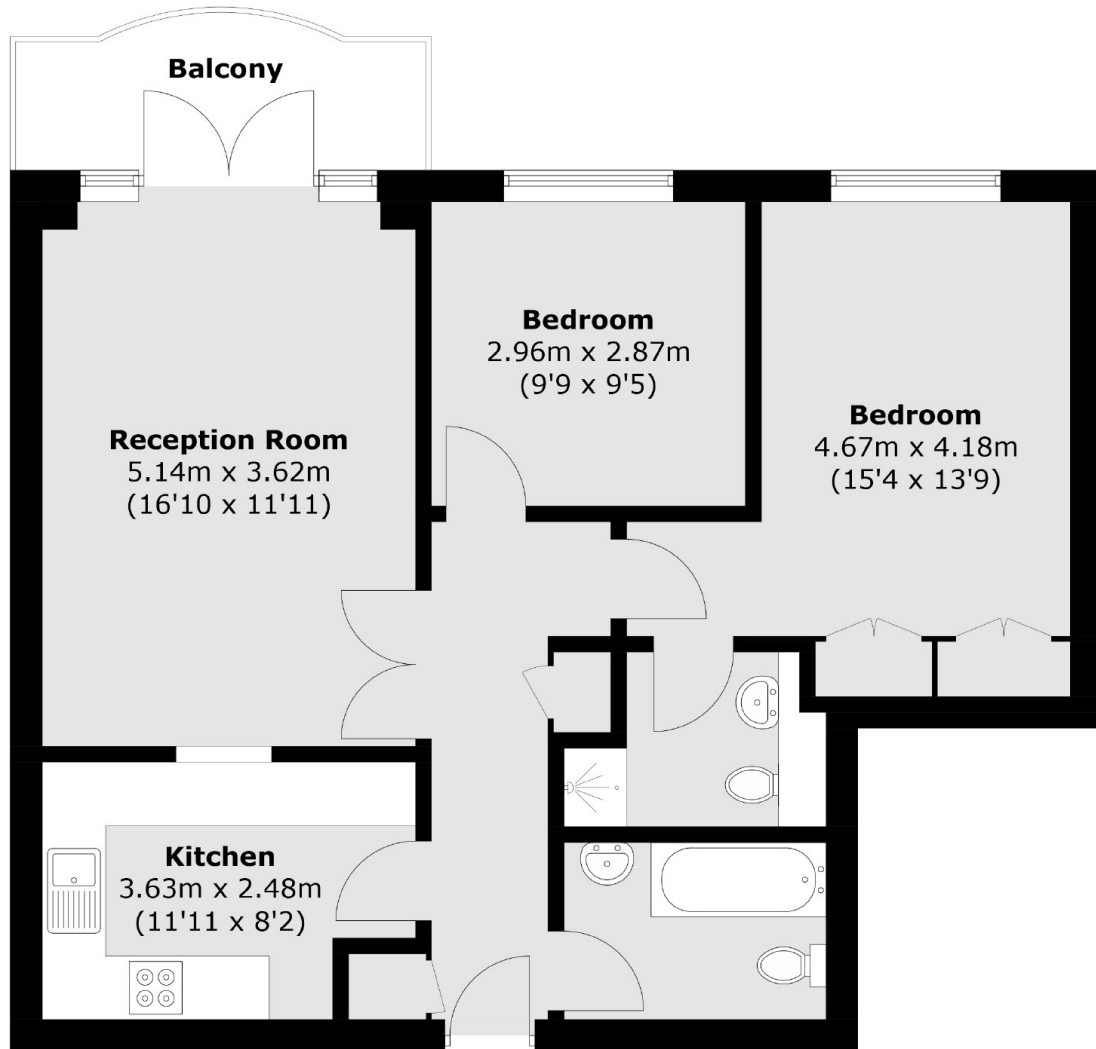
A two bedroom home located in the sought after Atlantic Wharf development offered to the market on a chain free basis. The property includes allocated parking, a private balcony, two bathrooms, 900 plus year lease and a day porter.

Atlantic Wharf is under 0.5 miles from Limehouse DLR Station which offers good links to the City and Canary Wharf. The Thames Path and the Cycle Super highway is also moment from the development.

Features

- Private Balcony
- Two Bedrooms
- Two Bathroom
- Allocated Parking
- Share Of Freehold
- 900 Plus Year Lease

Jardine Road, London, E1W



Total area (approx.): 68.2 sq. m (734.1 sq. ft)
Balcony: 5.1 sq. m (54.9 sq. ft)