

Ensign Street, E1

£550,000

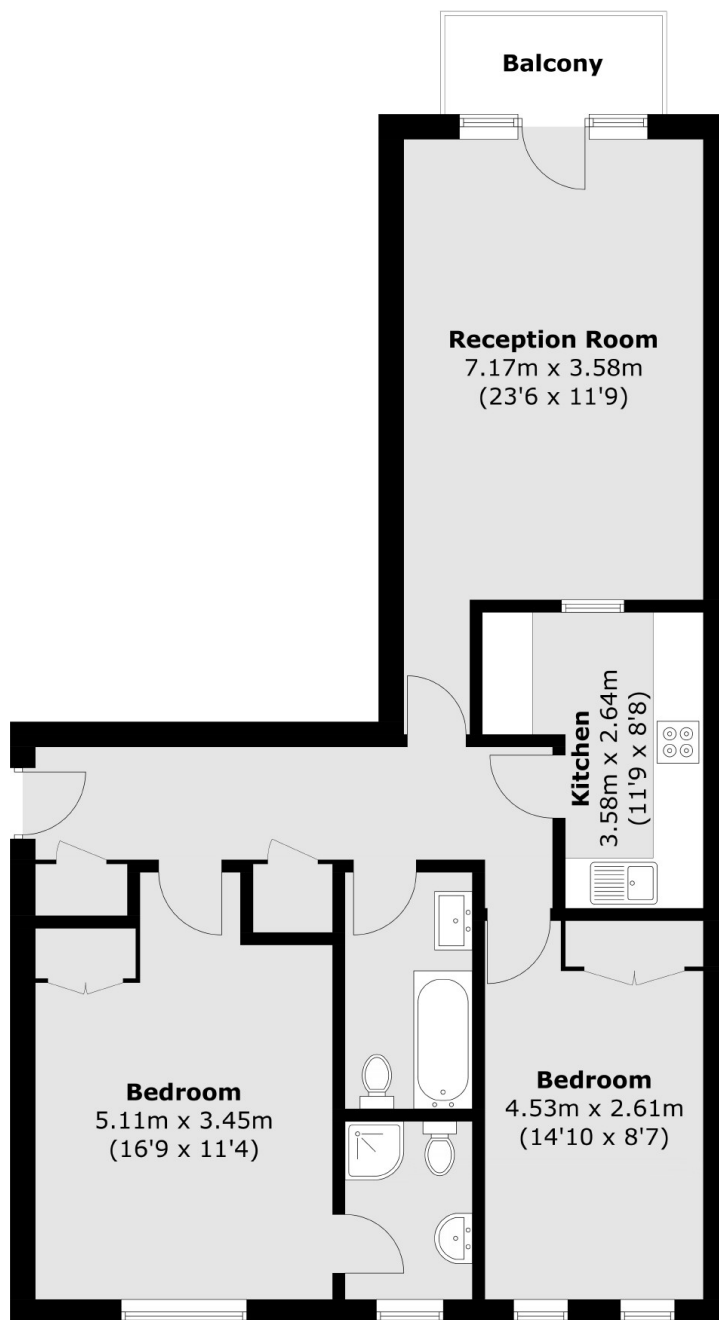
Offering over 850 Sq.Ft of ample living space is this two bedroom home located in a small development on Ensign Street. Features to include an allocated parking, private balcony, communal rooftop terrace and two bathrooms.

Ensign Street is a 10 minute walk to St Katherine's Docks which offers a variety of restaurant and bars, and a 9 minute walk to Tower Hill station offering great links into Canary Wharf and the City.

Features

- 850 Square Feet
- Two Bedrooms
- Two Bathrooms
- Private Balcony
- Long Lease
- Allocated Parking

Ensign Street, London, E1



Total area (approx.): 79.0 sq. m (850.3 sq. ft)
Balcony area (approx.): 3.1 sq. m (33.4 sq. ft)