



Ratcliffe Cross Street, E1

£520,000

Presented in immaculate condition is this two bedroom home. Features to include open plan living space, private balcony, large communal garden and wooden flooring throughout.

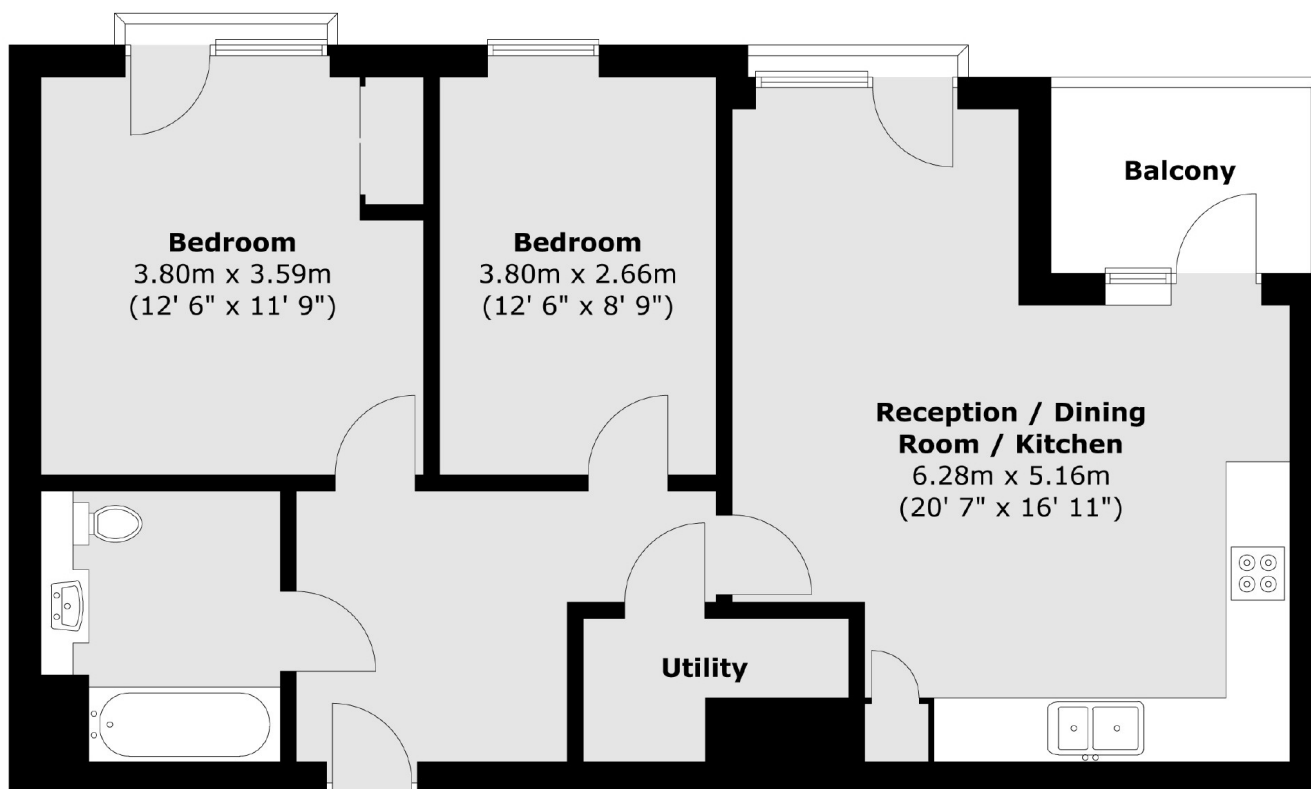
Ratcliffe Cross Street is just 0.2 miles from Limehouse DLR station offering great links into Canary Wharf and the City.

Features

- 762 Sq.Ft.
- Two Double Bedrooms
- Private Balcony
- Open Planned Living Space
- Wooden Flooring Throughout
- Long Lease

Ratcliffe Cross Street, London, E1

Third Floor



Total area (approx.) : 70.8 sq. m (762 sq. ft)
Total balcony area (approx.) : 5.7 sq. m (61 sq. ft)