



Morton Close, E1

£370,000

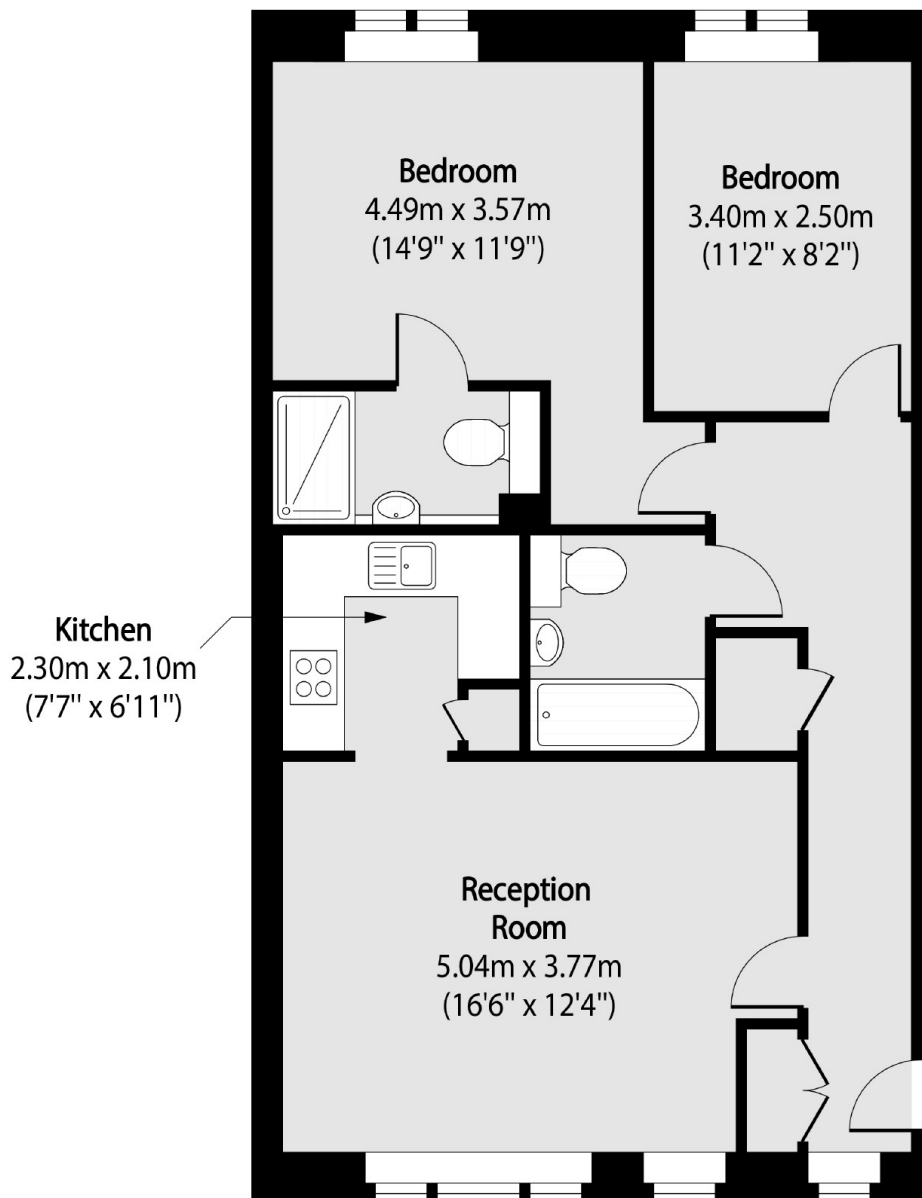
Located within a gated development is this newly decorated two bedroom home offering 700 Sq.Ft of ample living space in the sought after Morton Close. Features to include two bathrooms, secure entry phone system, 900 plus year lease and no onward chain.

Morton Close is under a quarter of a mile from location just 4 minutes from Shadwell DLR Station which offers direct links to Canary Wharf and Bank.

Features

- Gated Development
- Newly Decorated
- 700 Sq.Ft
- Two Bedrooms
- Two Bathrooms
- Ground Floor
- No Onward Chain

Morton Close, London, E1



Total area (approx): 65.11 sq m (701 sq. ft)