



Jardine Road, E1W

£400,000

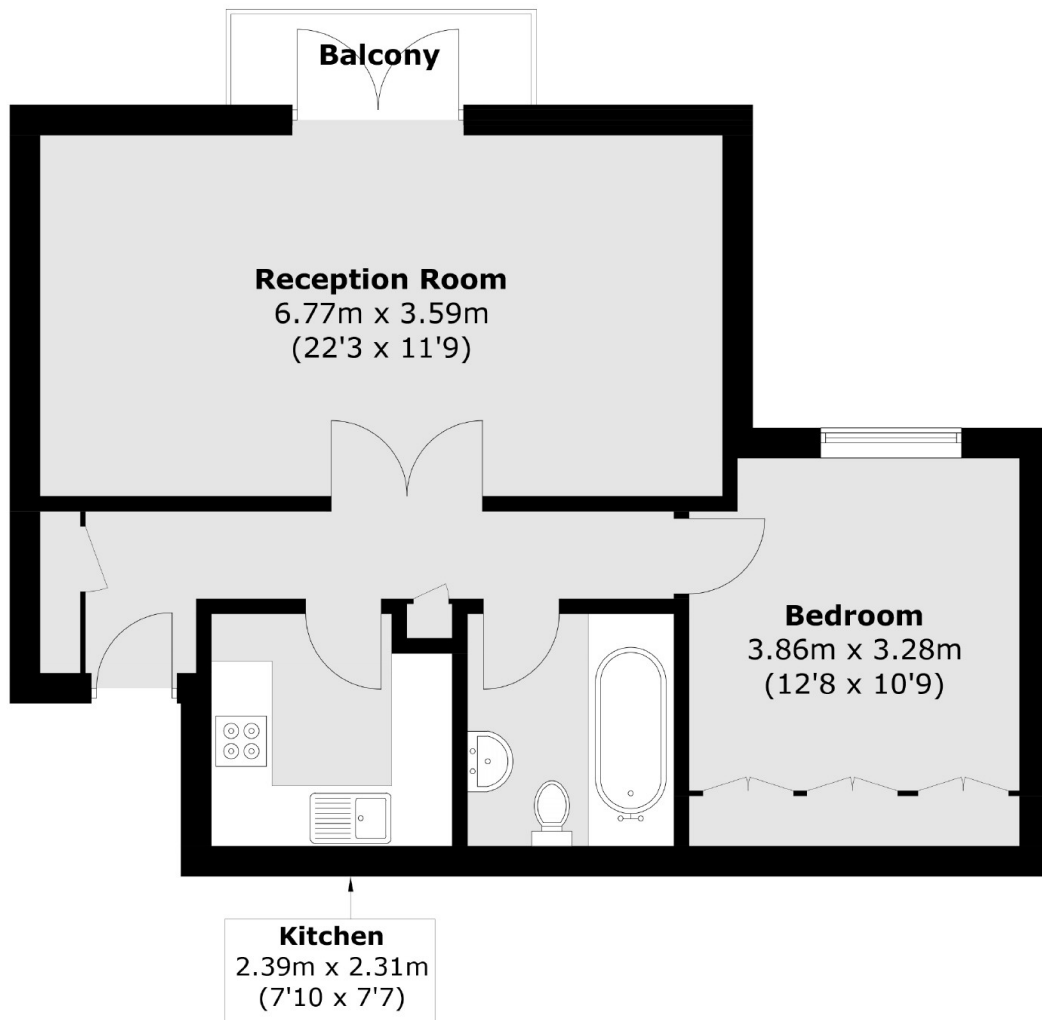
A one bedroom riverside home located in the sought after Atlantic Wharf. The property comes with a 900 plus year lease, allocated parking, private balcony with river views and is offered with no onward chain.

Atlantic Wharf is located by the Thames path and is ideally positioned for Limehouse DLR Station which provides good links to The City and Canary Wharf.

Features

- 610 Sq.Ft
- Allocated Parking
- River Views
- Day Porter
- Riverside Development
- 900 Plus Year Lease

Jardine Road, London, E1W



Second Floor

Total area (approx.): 56.7 sq. m (610.3 sq. ft)
Balcony area : 2.7 sq. m (29.0 sq. ft)