



## Wapping Lane, E1W

£390 Per week

A unique one bedroom apartment on the third floor of this warehouse conversion. This modern apartment has an open plan reception room, a second study/guest room, private west facing balcony and day porter.

Gun Place is ideally located for local transport links including Wapping Overground station providing easy access to Canary Wharf and The City.

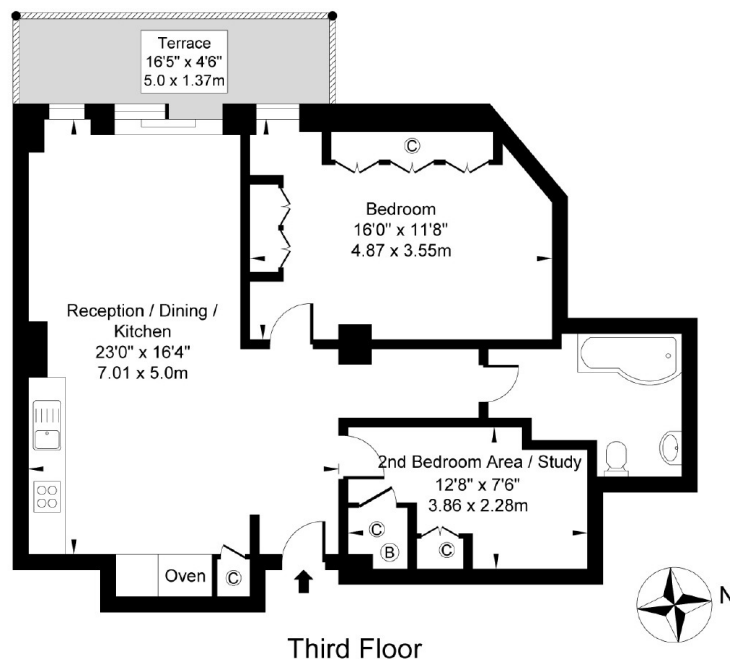
### Features

- One Bedroom
- One Bathroom
- Wooden Flooring
- Study/Guest Room
- Private Balcony
- Communal Roof Terrace

Wapping Lane,  
London, E1W

## Gun Place Wapping E1W

Approx. Gross Internal Area 713.97 Sq Ft - 66.33 Sq M



Third Floor

For Illustration Purposes Only - Not To Scale - Floor Plan by inter Design Photography  
www.interdesignphotography.com

This floor plan should be used as a general outline for guidance only.  
All Measurements are approximate and for illustration purposes only as defined by the RICS code of Measuring Practice © 2016.

### Contact

To arrange a viewing call our office on the number below or visit our website.



Energy Rating: . We aim to make our particulars both accurate and reliable. However they are not guaranteed; nor do they form part of an offer or contract. If you require clarification on any points then please contact us, especially if you're traveling some distance to view. Please note that appliances and heating systems have not been tested and therefore no warranties can be given as to their good working order.