



Narrow Street, E14

£834,950

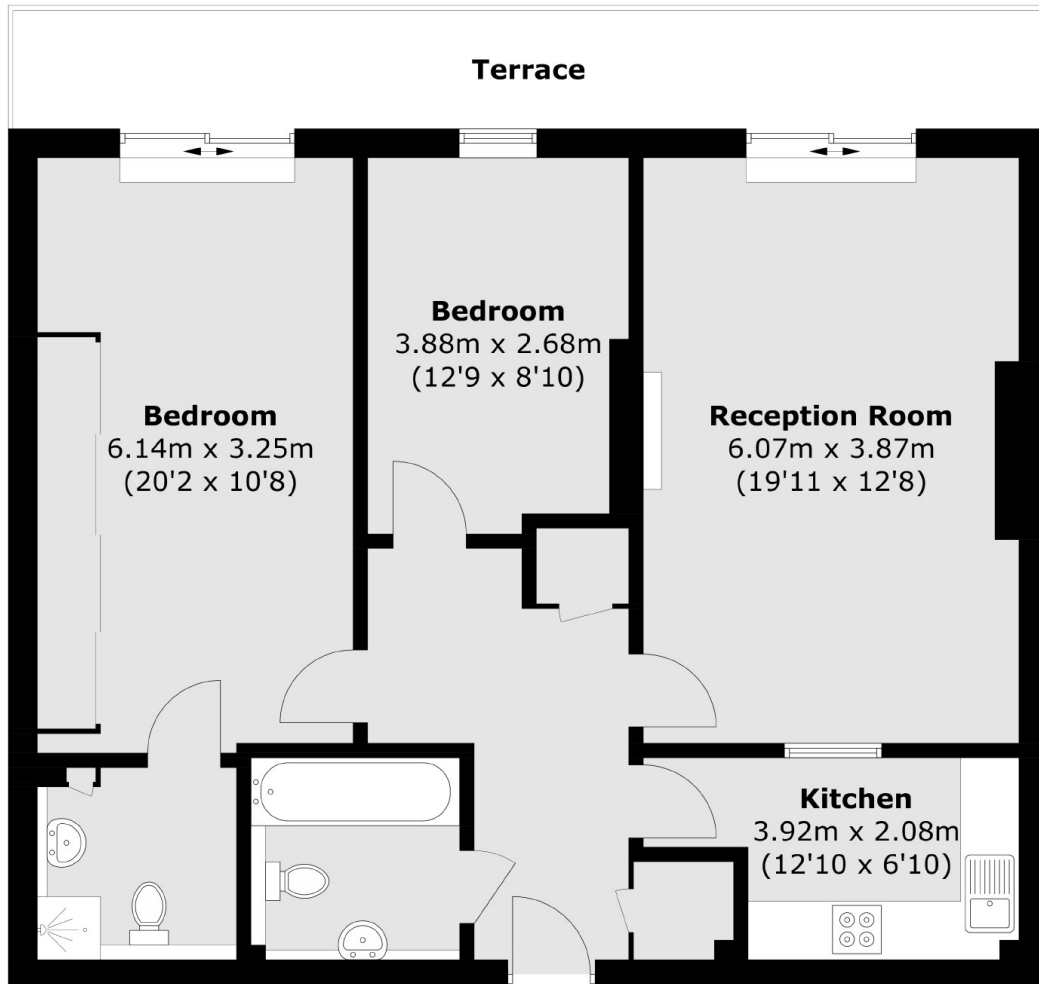
Offering over 907 sq.ft of ample living space is this two bedroom penthouse apartment with additional 140 sq.ft terrace with panoramic views of the river, Canary Wharf and London skyline. Refurbishment includes AEG kitchen, new bathrooms and flooring, and enhanced storage. There is also secure allocated parking and concierge service.

Victoria Wharf is a quarter of a mile to Limehouse DLR Station which provides excellent links to The City and Canary Wharf. The development is located on Narrow Street which has a selection of restaurants and riverside pubs including the Gordon Ramsey pub The Narrow.

Features

- Penthouse
- Share of Freehold
- Over 907sq ft
- Approx.140 sq ft Terrace
- Panoramic River Views
- Allocated Parking

Narrow Street, London, E14



Total area (approx.): 84.3 sq. m (907.4 sq. ft)
Terrace: 12.9 sq. m (138.8 sq. ft)