



## Cable Street, E1W

### £450,000

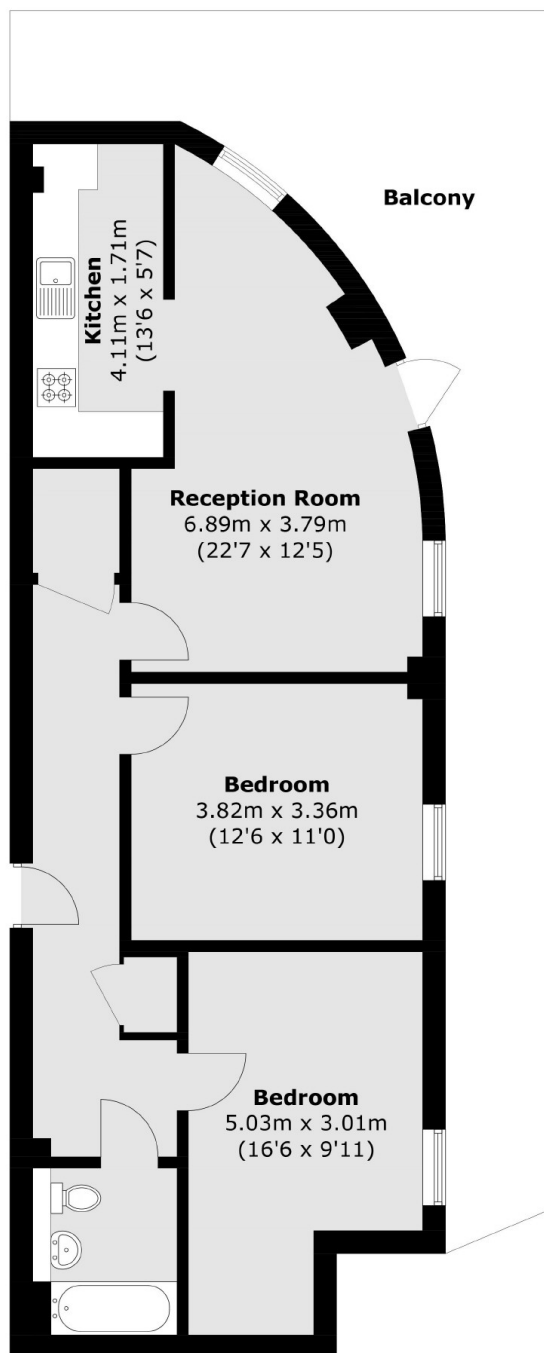
A two double bedroom home in immaculate condition located on the top floor with an additional 389 sq.ft terrace with City views.. The property features wooden flooring, secure entry phone system and lift access.

Warton Court is ideally positioned for Limehouse and Shadwell DLR and Wapping Overground station which all provide good access to the he City, and Canary Wharf.

### Features

787 Sq.ft  
389 sq. ft Terrace  
Two Double Bedrooms  
Secure Entry System  
Lift Access  
Top Floor

# Cable Street, London, E1W



Total area (approx.): 73.2 sq. m (787.9 sq. ft)  
Balcony: 36.2 sq. m (389.6 sq. ft)