



## Jardine Road, E1W

£550,000

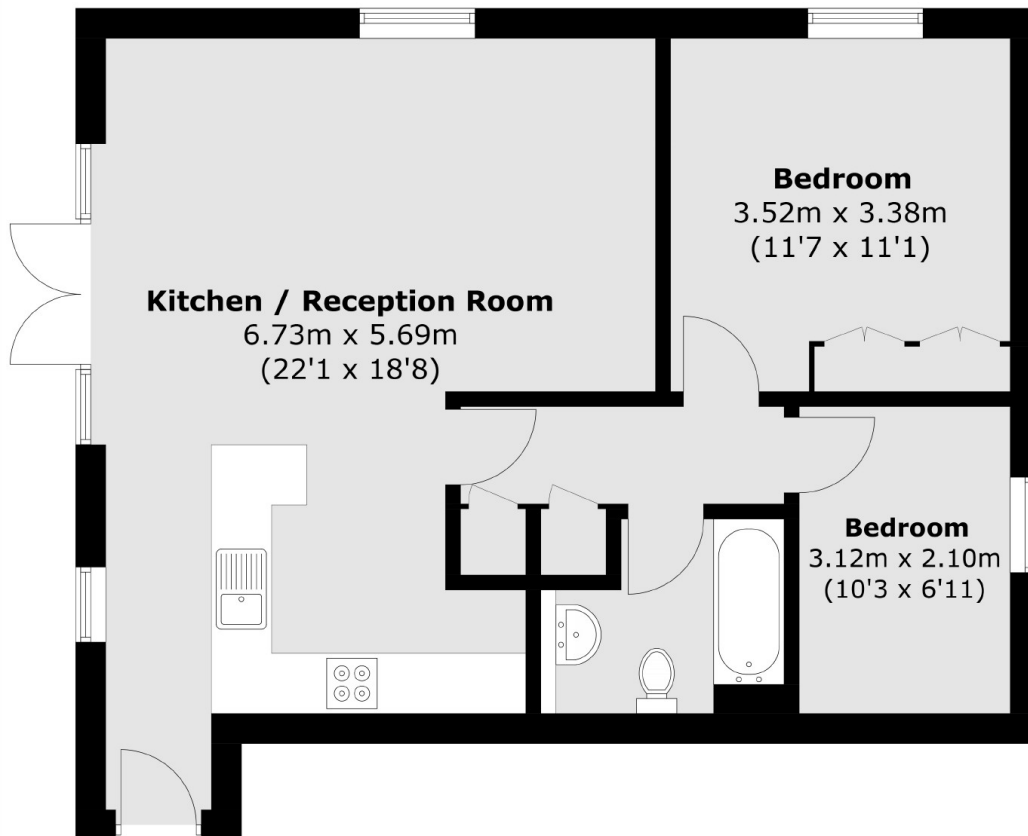
A two bedroom modern apartment within a gated development. The property features floor to ceiling windows that allow natural light throughout the reception and is offered with no onward chain. Residents also benefit from undercroft parking, communal garden and a day porter.

Unicorn Building is in the heart of Wapping and just a short walk from Limehouse DLR Station which offers great links to Canary Wharf and The City.

### Features

- River Fronted
- Communal Garden
- Undercroft Parking
- 668 Sq Ft
- Day Porter
- No Onward Chain

# Jardine Road, London, E1W



Total area (approx.): 62.1 sq. m (668.4 sq. ft)