



## Fowey Close, E1W

£716 Per week


A spacious three bedroom town house in West Wapping spread over three floors. The property has a private rear garden, separate kitchen and a parking space.

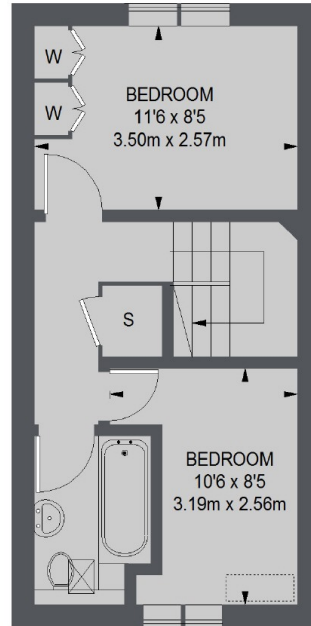
Fowel Close is in the heart of Wapping, moments from an array of shops, bars and restaurants including the popular St Katharine Docks.

### Features

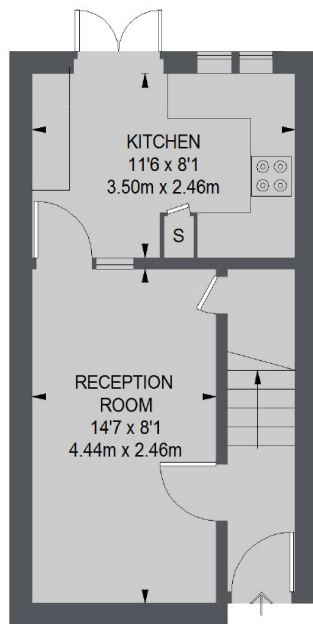
- Three Bedrooms
- One Bathroom
- Town House
- Private Garden
- Parking
- Furnished

# Fowey Close, London, E1W

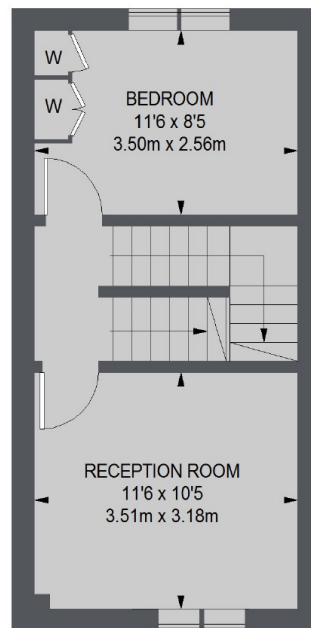
 = REDUCED HEADROOM  
BELOW 1.5 M / 5'0



**SECOND FLOOR**



**GROUND FLOOR**



**FIRST FLOOR**

TOTAL APPROX. FLOOR AREA 847 SQ. FT. (78.66 SQ. M.)