



Wapping High Street, E1W

£750,000

A much sought after two double bedroom home located within Cinnabar Wharf.. Features to include additional 114 Sq.Ft terrace, secure allocated parking, concierge service, 900 plus year lease and no onward chain.

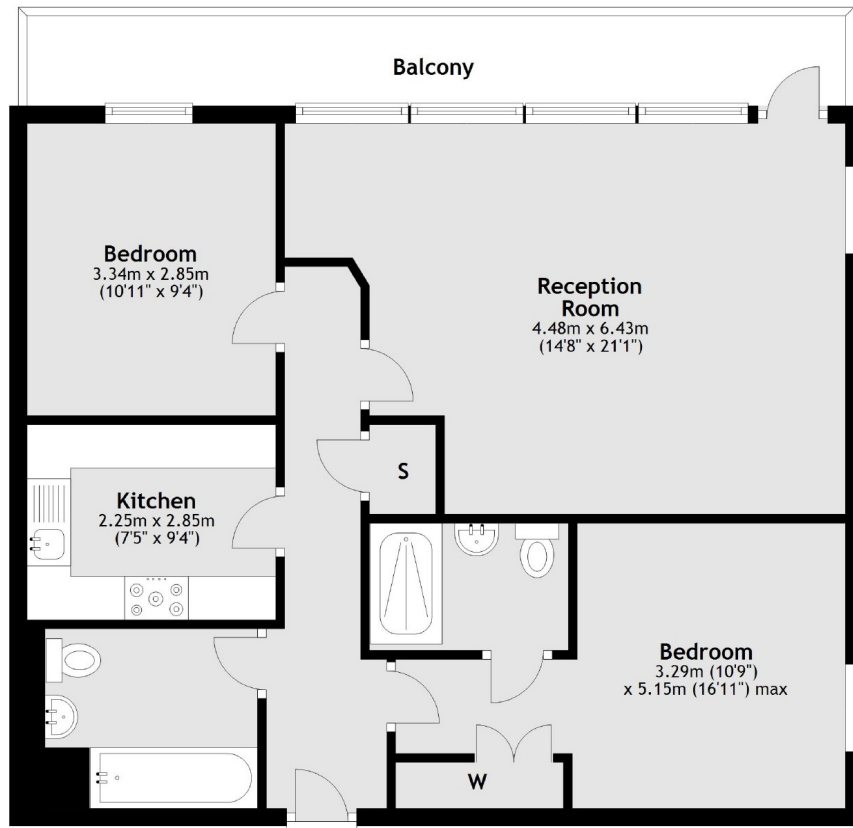
Cinnabar Wharf is ideally located within easy reach of St Katharine Docks which offers a wide variety of cafe's, bars and restaurants with a vibrant atmosphere. Tower Hill (underground), Tower Gateway DLR)and Wapping overground stations are all within close proximity and provide regular transport links across London.

Features

- 790 Sq.Ft
- 114 Sq.Ft Terrace
- Two Bedrooms
- Two Bathrooms
- West Wapping Location
- Secure Allocated Parking

Wapping High Street, London, E1W

Second Floor



Main area: Approx. 73.4 sq. metres (790.5 sq. feet)
Plus balconies, approx. 10.6 sq. metres (114.0 sq. feet)