



## Jardine Road, E1W

£650,000

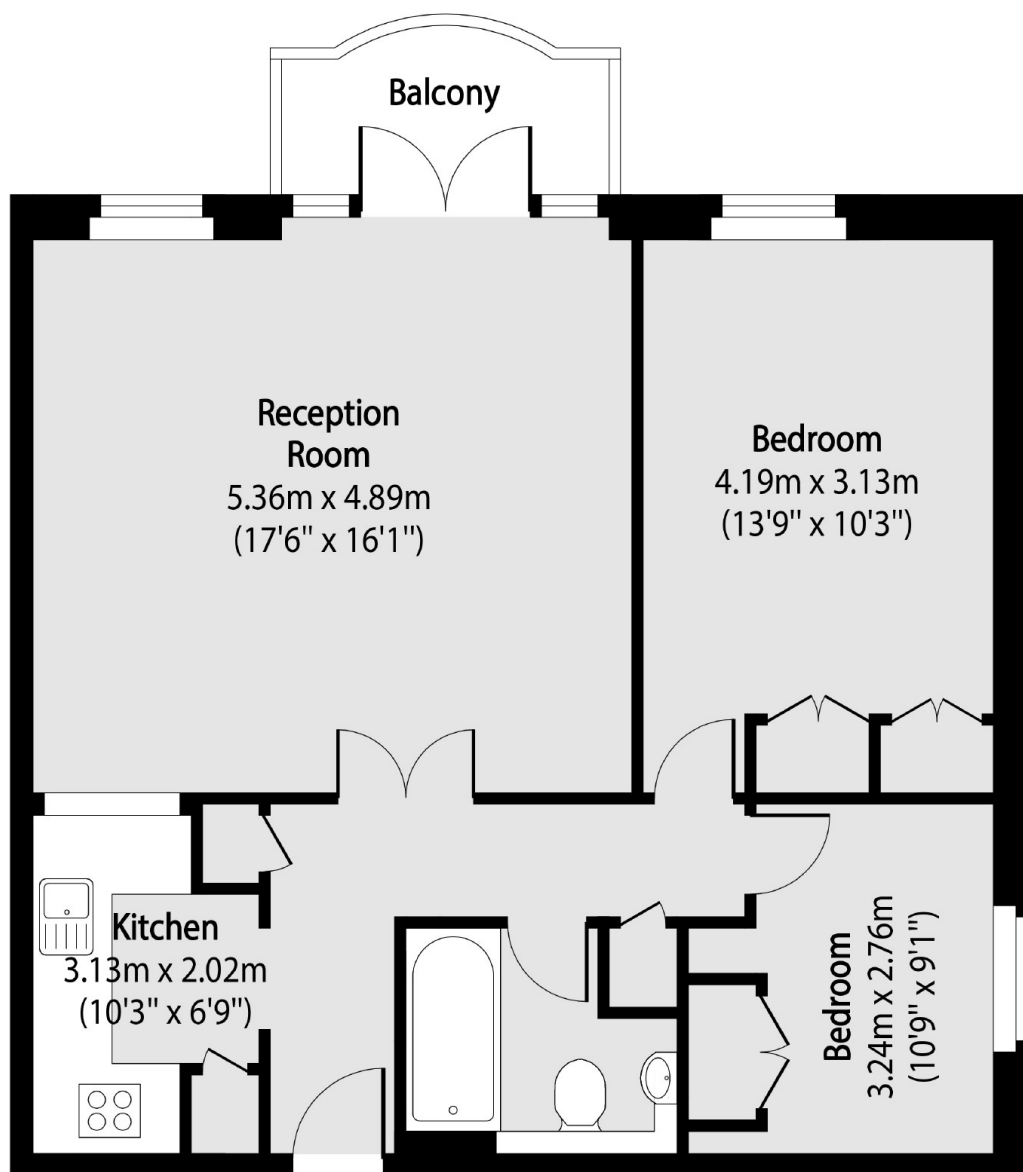
A two bedroom home offering 750 Sq.Ft of ample living space within the sought after river fronted development Atlantic Wharf. Features to include re-fitted kitchen, re-fitted bathroom, large reception room, covered parking, day porter and 900 plus year lease.

Atlantic Wharf is located by the Thames path and is ideally positioned for Limehouse DLR Station which provides good links to The City and Canary Wharf

### Features

- River Fronted Development
- River and Canary Wharf Views
- Secure Allocated Parking
- Private Balcony
- Day Porter
- Communal Gardens

# Jardine Road, London, E1W



Total area (approx): 69.43 sq m (747 sq. ft)

Balcony total area (approx): 3.87 sq m (41 sq. ft)