



## Watney Street, E1

£375,000

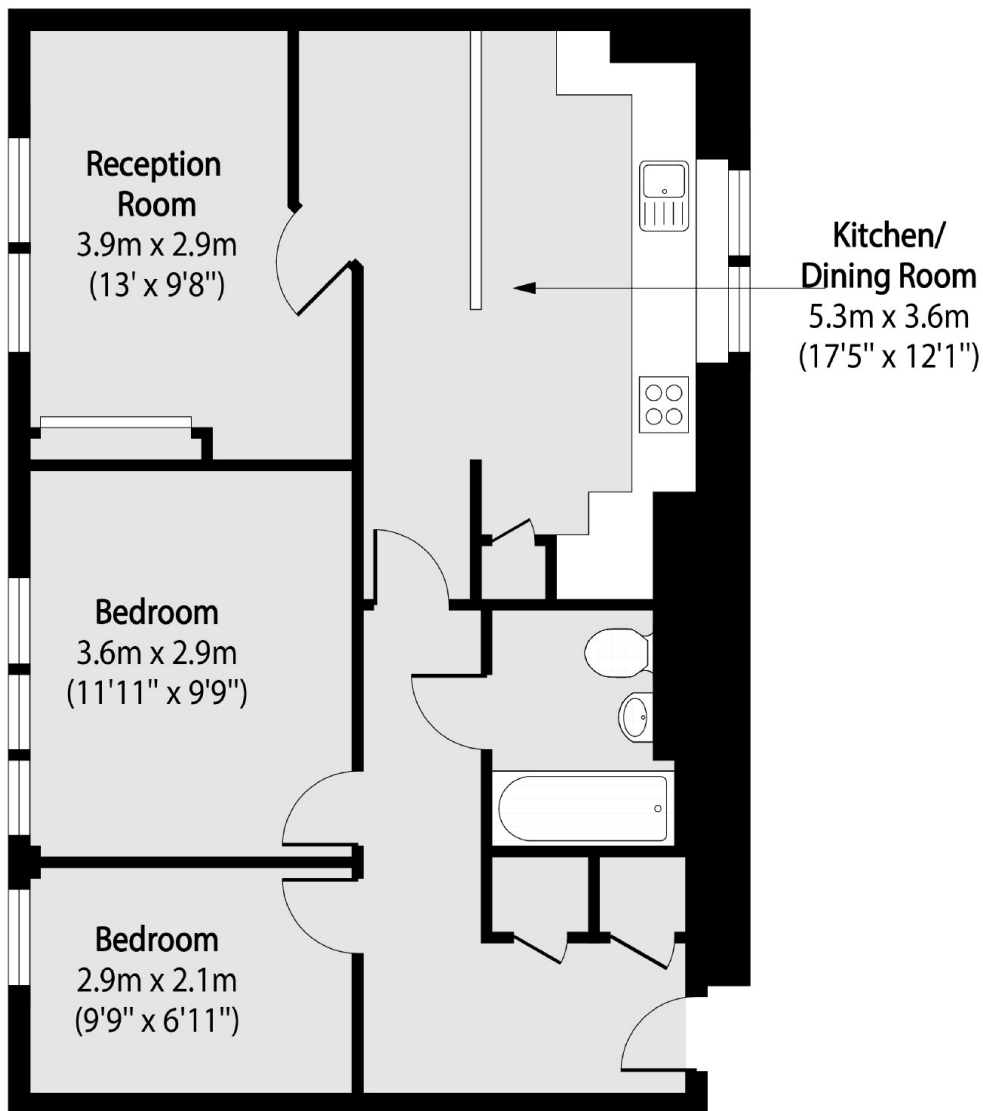
A two bedroom apartment located in E1 presented in immaculate condition. Features to include a large dining room and kitchen with large west facing windows, with views of the City of London. The property also has two modern bedrooms and one modern bathroom.

Hannah Building is located in E1 and is 0.1 miles from Shadwell DLR and overground Station which offers good links to The City and Canary Wharf.

### Features

- Two Bedrooms
- Fourth Floor
- Modern Kitchen
- Modern Bathroom
- Transport Links
- Lift Access

# Watney Street, London, E1



Total area (approx): 60 sq m (646 sq. ft)