



Gauging Square, E1W

£2,000,000

Offering 1,500 sq.ft of ample living space is this three bedroom home located in the sought after London Dock development. The property features a private balcony with City and river views, three bathrooms, residents leisure facilities and concierge service.

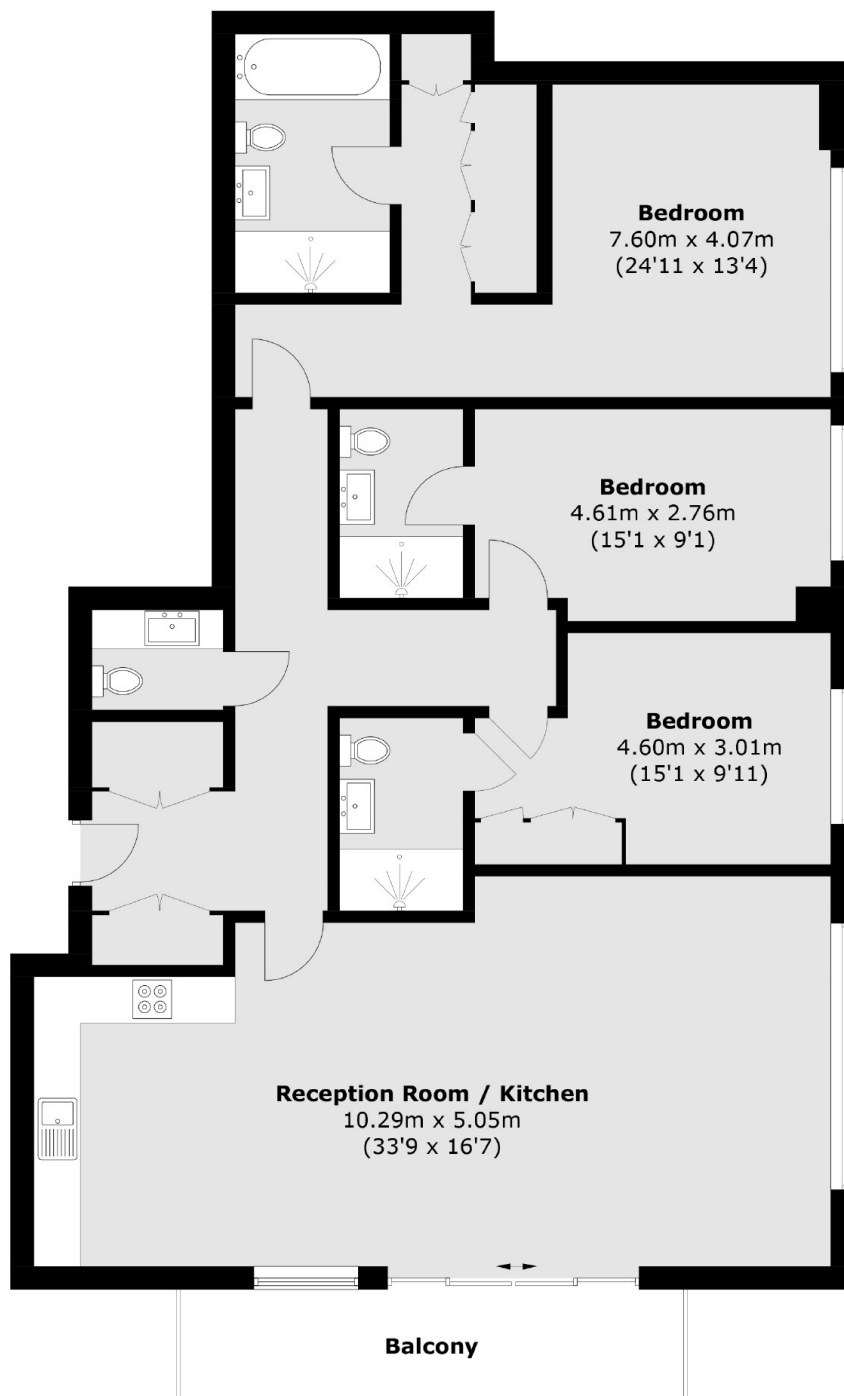
Cashmere Wharf is ideally located for Tower Hill underground station which provides good links to the City and Canary Wharf.

Waitrose supermarket is also within walking distance as well as Tower Bridge.

Features

- 1495.1 Sq.ft
- 97.9 Sq.ft Terrace
- Three Bathrooms
- Additional Cloak Room
- Dual Aspect Reception
- Residents Leisure Facilities

Gauging Square, London, E1W



Total area (approx.): 138.9 sq. m (1,495.1 sq. ft)
Balcony(approx.): 9.1 sq. m (97.9 sq. ft)