



## The Highway, E1W

£595,000

A two bedroom home offering over 800 Sq.Ft of ample living space within the sought after riverside development Free Trade Wharf. Features to include private balcony offering water views, residents leisure facilities, concierge service and secure allocated parking.

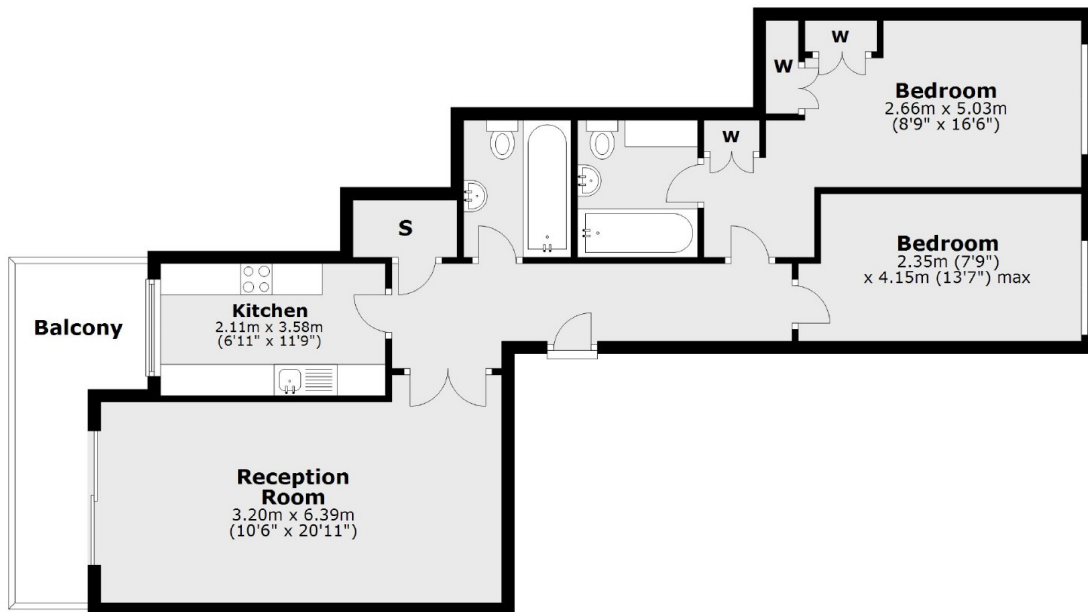
Free Trade Wharf is a riverside development that's a short walk away from Limehouse DLR Station and the famous pubs in Wapping.

### Features

Two Bedrooms  
Two Bathrooms  
River Facing  
Allocated Parking  
Residents Function Room  
Guide Price £575,000-  
£600,000

# The Highway, London, E1W

## Second Floor



Main area: Approx. 76.1 sq. metres (819.3 sq. feet)  
Plus balconies, approx. 8.8 sq. metres (95.0 sq. feet)

**Dexters**

Wapping  
123 Wapping High Street  
London  
E1W 3NX  
Sales  
020 7650 5350

Energy Rating: B. We aim to make our particulars both accurate and reliable. However they are not guaranteed; nor do they form part of an offer or contract. If you require clarification on any points then please contact us, especially if you're traveling some distance to view. Please note that appliances and heating systems have not been tested and therefore no warranties can be given as to their good working order.

 **RICS** | Regulated  
Estate Agent  
and Letting Agent

dexters.co.uk