



Wapping Lane, E1W

£600,000

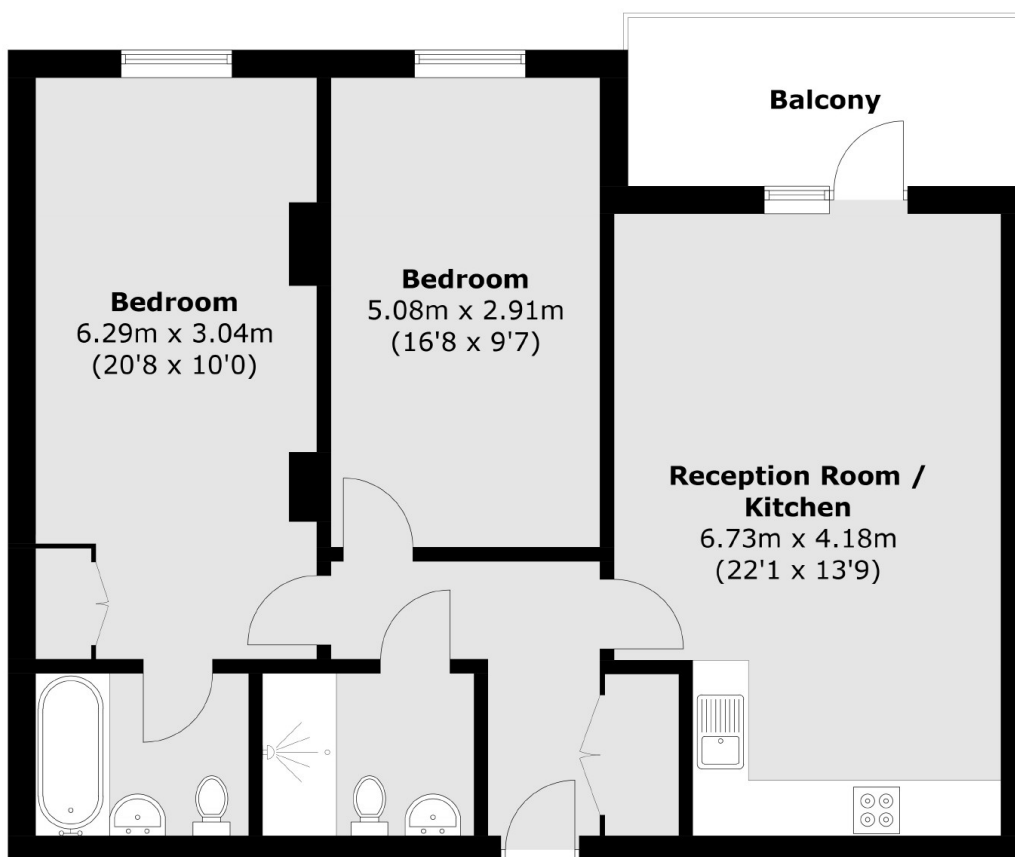
Offering 854.6 Sq.Ft of ample living space and additional 84 Sq.Ft terrace is this two bedroom home located in Wapping. Features to include secure allocated parking, two bathrooms, courtyard facing terrace and secure entry phone system.

Wapping Overground and Shadwell DLR and Tower Hill Underground all provide good links to the City and Canary Wharf.

Features

854.6 Sq.Ft
83.9 Sq.Ft Balcony
Allocated Parking
Courtyard Facing Balcony
Secure Entry Phone System
EWS1 Compliant

Wapping Lane,
London, E1W



Total area (approx.): 79.4 sq. m (854.6 sq. ft)
Balcony area (approx.): 7.8 sq. m (83.9 sq. ft)