



## Knighten Street, E1W

£875,000

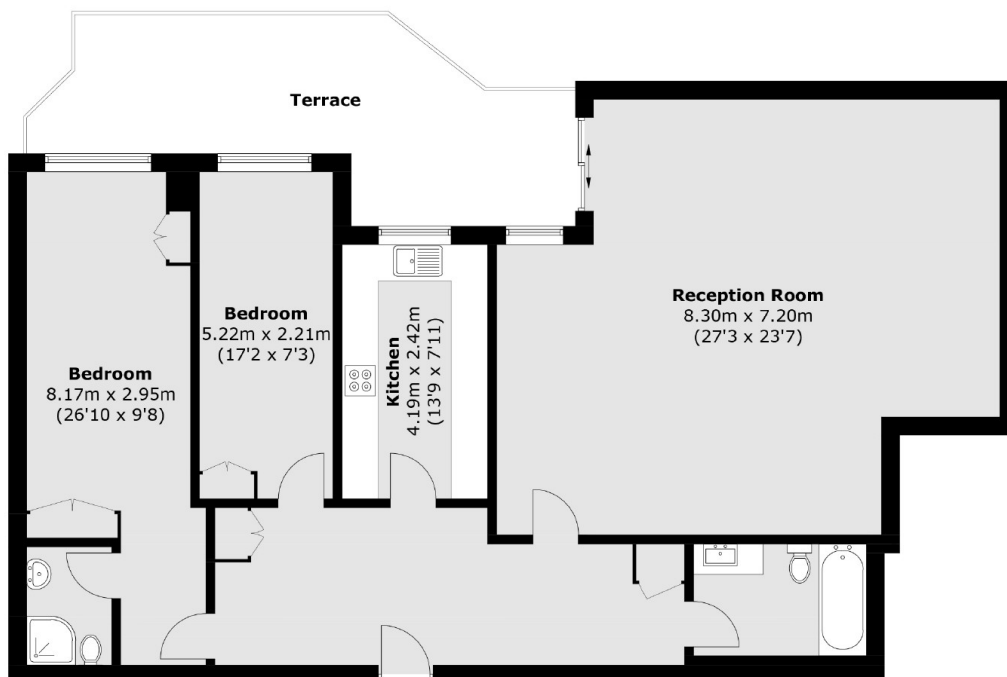
Offering 1,346.5 sq.ft of ample living space and private terrace measuring 218 sq ft is this two bedroom home located Wapping. Features to include open plan reception, wooden flooring, re-fitted bathroom, allocated parking, concierge service and communal garden.

Hermitage Court is ideally located for both Tower Hill and Wapping Overground Station which both offer good links to The City and Canary Wharf.

### Features

Offers In Excess Of  
1,346.5 Sq.Ft  
218.8 Sq.Ft Terrace  
Share Of Freehold  
Secure Underground Parking  
Communal Garden

# Knightsen Street, London, E1W



Total area (approx.): 125.1 sq. m (1,346.5 sq. ft)  
Terrace (approx.): 20.3 sq. m (218.8 sq. ft)