



## Knighten Street, E1W

£925,000

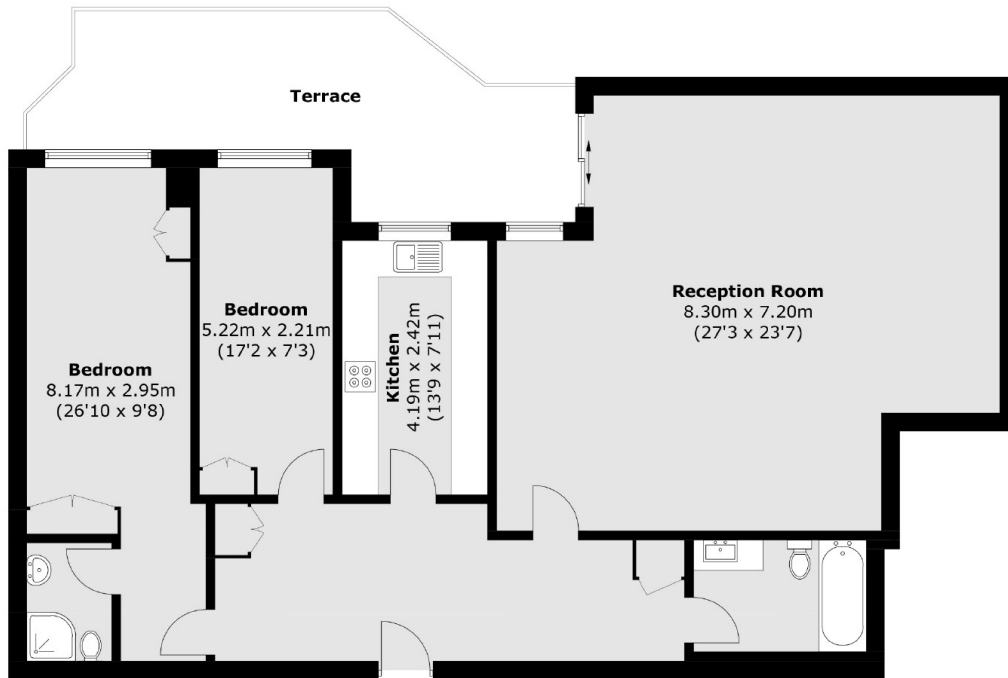
Offering 1,346.5 Sq.ft of ample living space and private terrace measuring 218 Sq .Ft is this two bedroom home located Wapping. Features to include open plan reception, wooden flooring, re-fitted bathroom, allocated parking, concierge service and communal garden.

Hermitage Court is ideally located for both Tower Hill and Wapping Overground Station which both offer good links to The City and Canary Wharf.

### Features

- 1,346.5 Sq.Ft
- 218.8 Sq.Ft Terrace
- Share Of Freehold
- Secure Underground Parking
- Two Bedrooms
- Communal Garden

Knighen Street,  
London, E1W



Total area (approx.): 125.1 sq. m (1,346.5 sq. ft)  
Terrace (approx.): 20.3 sq. m (218.8 sq. ft)