



Wapping High Street, E1W

£830 Per week

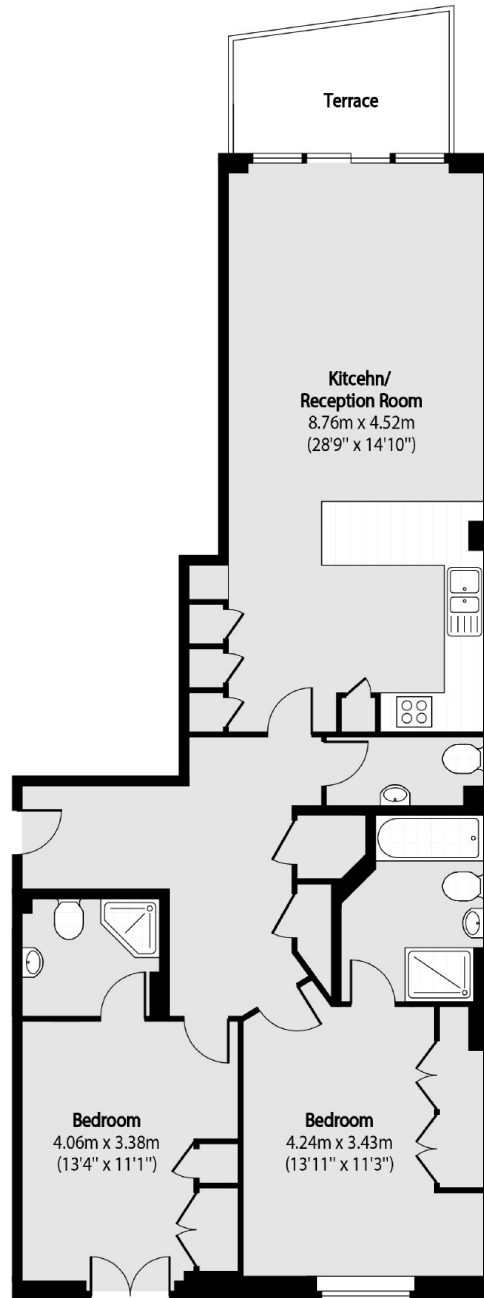
Recently refurbished two bedroom apartment situated on the fourth floor of Capital Wharf. With two bathrooms, concierge and private balcony overlooking the River Thames with views of Tower Bridge and The Shard.

Located on Wapping High Street close to St Katherines Docks. Wapping overground is 0.4miles away and Tower Hill underground is 0.8 miles away which is on the district line.

Features

- Two Bedrooms
- Two Bathrooms
- Concierge
- Gym
- River Views
- Underground Parking

Wapping High Street, London, E1W



Total area (approx): 95.22 sq m (1025 sq. ft)

Terrace total area (approx): 6.59 sq m (71 sq. ft)

Dexters

Wapping
123 Wapping High Street
London
E1W 3NX
Lettings
020 7650 5351

Energy Rating: . We aim to make our particulars both accurate and reliable. However they are not guaranteed; nor do they form part of an offer or contract. If you require clarification on any points then please contact us, especially if you're traveling some distance to view. Please note that appliances and heating systems have not been tested and therefore no warranties can be given as to their good working order.

 **RICS** | Regulated
Estate Agent
and Letting Agent

dexters.co.uk