



Burr Close, E1W

£600,000

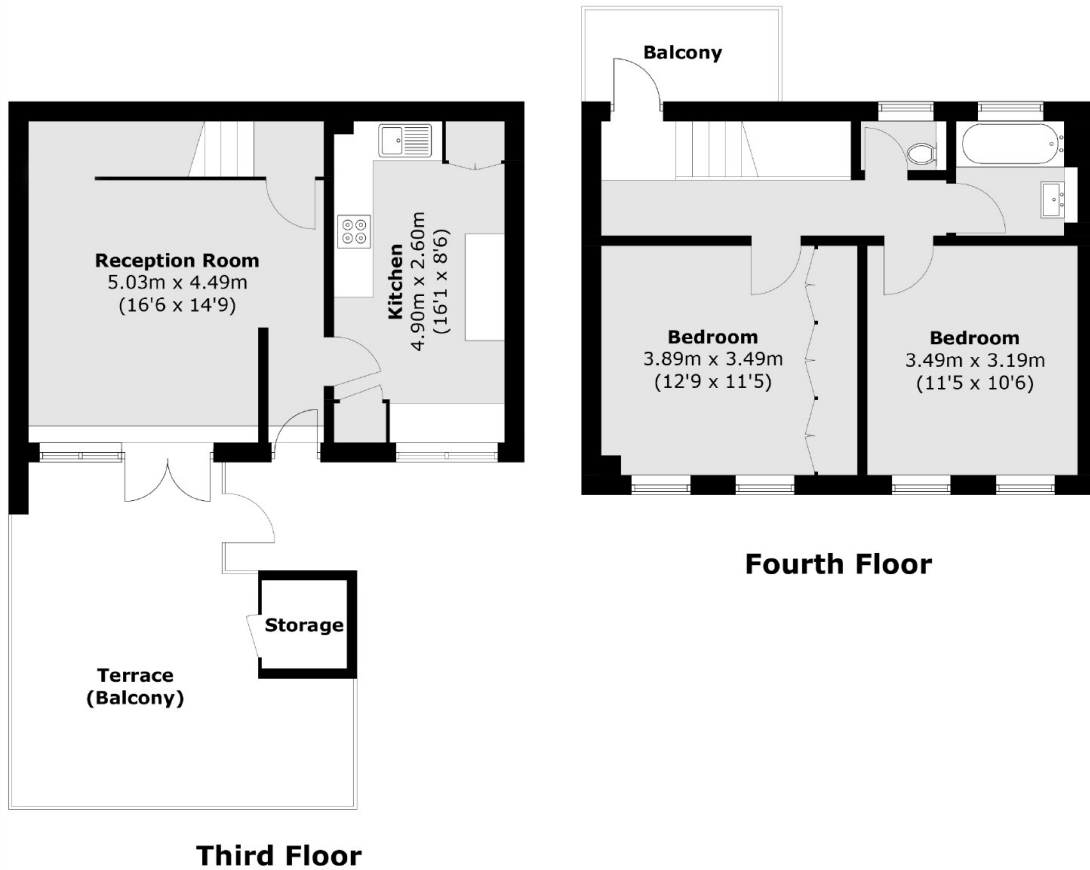
A two bedroom home presented in immaculate condition located within the sought after South Quay Estate. Features to include private garden, wood flooring, re-fitted kitchen, re-fitted bathroom, secure allocated garage and share of freehold.

The South Quay Plaza Estate is surrounded communal landscaped gardens and is within walking distance to Waitrose and Tower Hill. Tower Hill Station provides good links to the City and Canary Wharf.

Features

£600,000 -£650,000
Private Garden
Two Double Bedrooms
Re-Fitted Bathroom
Share Of Freehold
Garage

Burr Close, London, E1W



Total area (approx.): 75.1 sq. m (808.3 sq. ft)
Terrace / Balcony area : 25.5 sq. m (274.5 sq. ft)
Storage : 1.7 sq. m (18.3 sq. ft)