



## Jardine Road, E1W

### £475,000

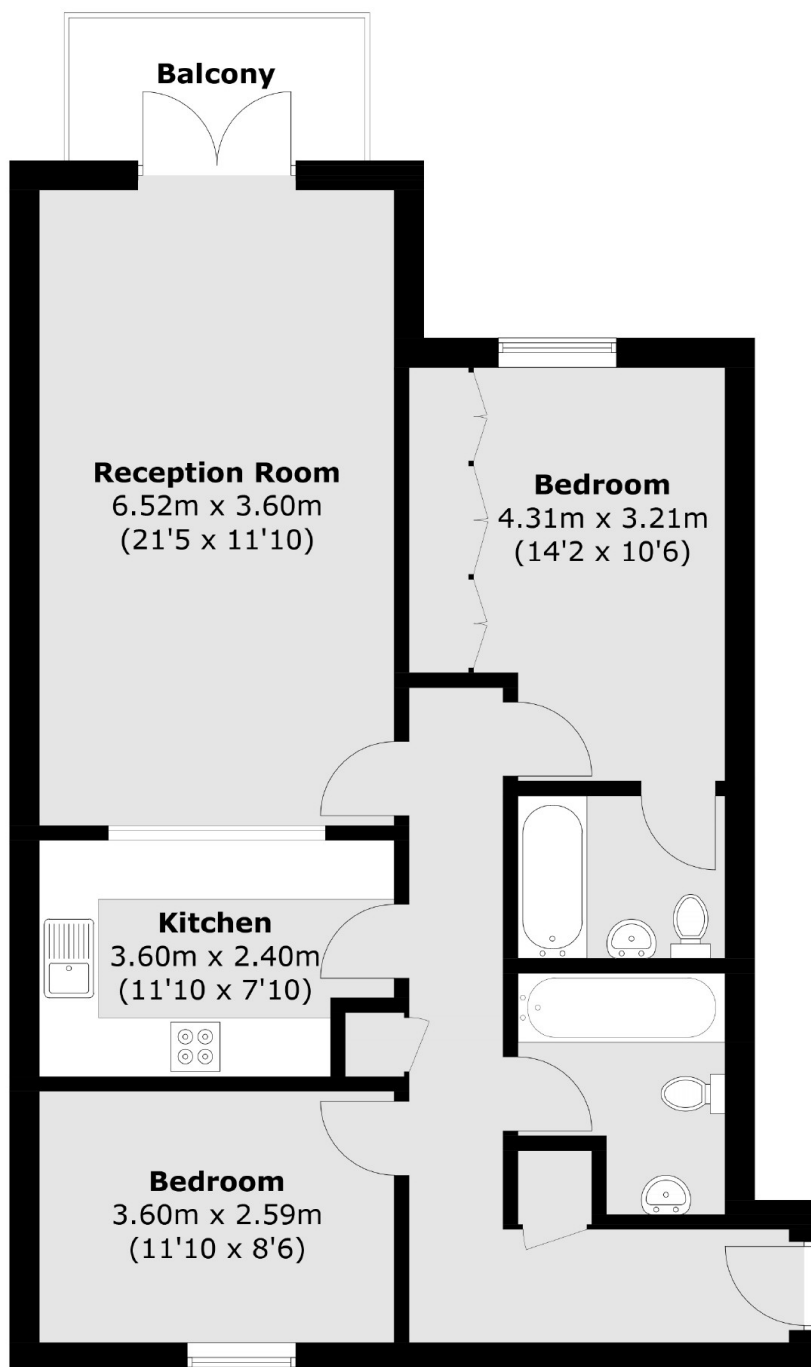
A two bedroom home located within Atlantic Wharf offered to the market on a chain free basis. Features to include private balcony with river views, day porter, allocated parking, a share of the management company and 900 plus year lease.

Atlantic Wharf is under 0.5 miles from Limehouse DLR Station which offers good links to the City and Canary Wharf. The Thames Path and the Cycle Super highway is also moment from the development.

### Features

- Two Bedrooms
- 822 Sq.Ft
- River Views
- Day Porter
- Two Double Bedrooms
- Allocated Parking

# Jardine Road, London, E1W



Total area (approx.): 76.4 sq. m (822.4 sq. ft)  
Balcony area (approx.): 4.3 sq. m (46.3 sq. ft)

## Dexters

Wapping  
123 Wapping High Street  
London  
E1W 3NX  
Sales  
020 7650 5350

Energy Rating: B. We aim to make our particulars both accurate and reliable. However they are not guaranteed; nor do they form part of an offer or contract. If you require clarification on any points then please contact us, especially if you're traveling some distance to view. Please note that appliances and heating systems have not been tested and therefore no warranties can be given as to their good working order.

 **RICS** | Regulated  
Estate Agent  
and Letting Agent

[dexters.co.uk](https://www.dexters.co.uk)