



## Cobblestone Square, E1W

£325,000

Located on the second floor is this well presented studio apartment within the sought after Park Vista Tower. Features to include private balcony with canal views, modern kitchen and bathroom, residents leisure facilities and concierge service.

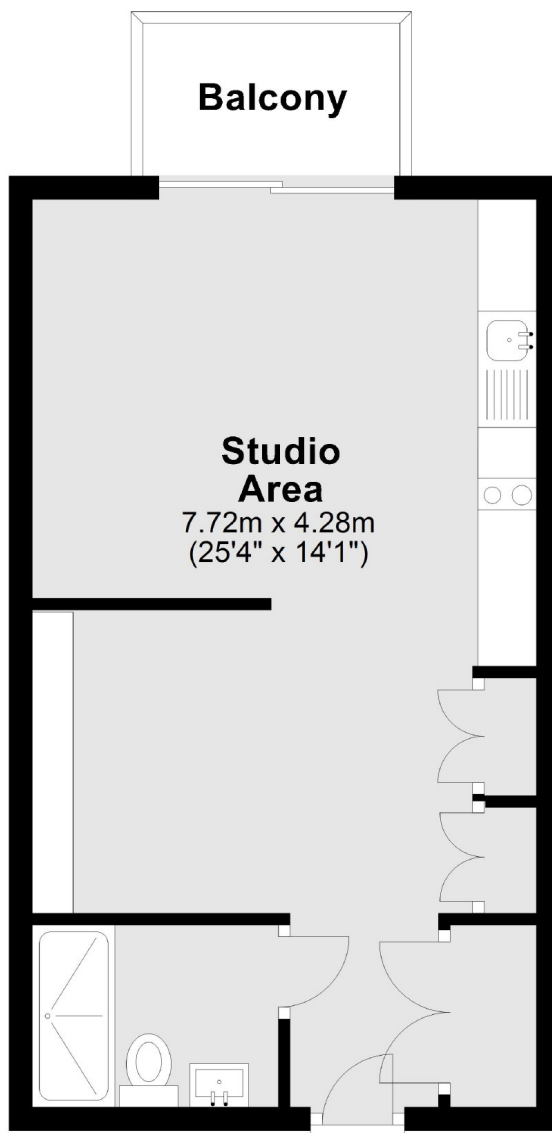
Park Vista is situated on Cobblestone Square approx 10 minutes walk from Wapping overground station and a further 5 minutes walk from Shadwell DLR and overground Station.

### Features

- 356 Sq. Ft
- Private Balcony
- Canal Views
- Residents Leisure Facilities
- Concierge Service
- No Onward Chain

Cobblestone Square,  
London, E1W

## Second Floor



Main area: Approx. 33.1 sq. metres (356.0 sq. feet)  
Plus balconies, approx. 3.1 sq. metres (32.9 sq. feet)

**Dexters**

Wapping  
123 Wapping High Street  
London  
E1W 3NX  
Sales  
020 7650 5350

Energy Rating: B. We aim to make our particulars both accurate and reliable. However they are not guaranteed; nor do they form part of an offer or contract. If you require clarification on any points then please contact us, especially if you're traveling some distance to view. Please note that appliances and heating systems have not been tested and therefore no warranties can be given as to their good working order.

 **RICS** | Regulated  
Estate Agent  
and Letting Agent

dexters.co.uk