



Merino Gardens, E1W

£807 Per week

A brand new and spacious apartment located within the new high end London Dock development. The property has two large double bedrooms (with fitted wardrobe), two bathrooms, a spacious open reception room, fully fitted kitchen and private balcony.

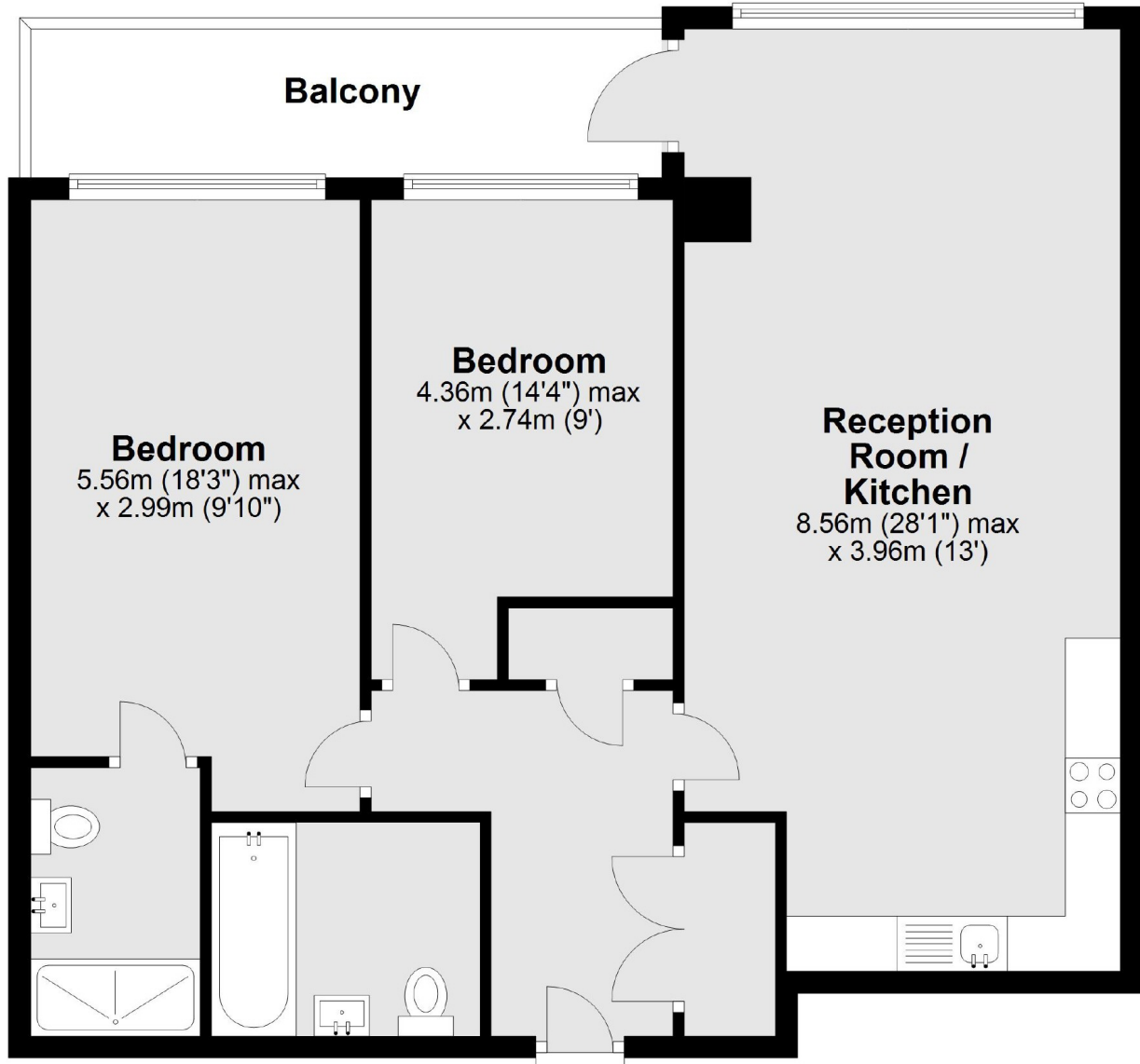
London Dock Development is located next to iconic St Katherines Dock and Tower Bridge with an amazing selection of bars and restaurants.

Features

- Two Bedrooms
- Two Bathrooms
- Brand New
- High Specification
- Gym/Spa/Concierge
- Unfurnished

Merino Gardens,
London, E1W

Seventh Floor



Main area: Approx. 79.4 sq. metres (855.1 sq. feet)
Plus balconies, approx. 8.5 sq. metres (91.1 sq. feet)

Dexters

Wapping
123 Wapping High Street
London
E1W 3NX

Lettings
020 7650 5351

Energy Rating: B. We aim to make our particulars both accurate and reliable. However they are not guaranteed; nor do they form part of an offer or contract. If you require clarification on any points then please contact us, especially if you're traveling some distance to view. Please note that appliances and heating systems have not been tested and therefore no warranties can be given as to their good working order.

 **RICS** | Regulated
Estate Agent
and Letting Agent

dexters.co.uk