



Wapping Lane, E1W

£675,000

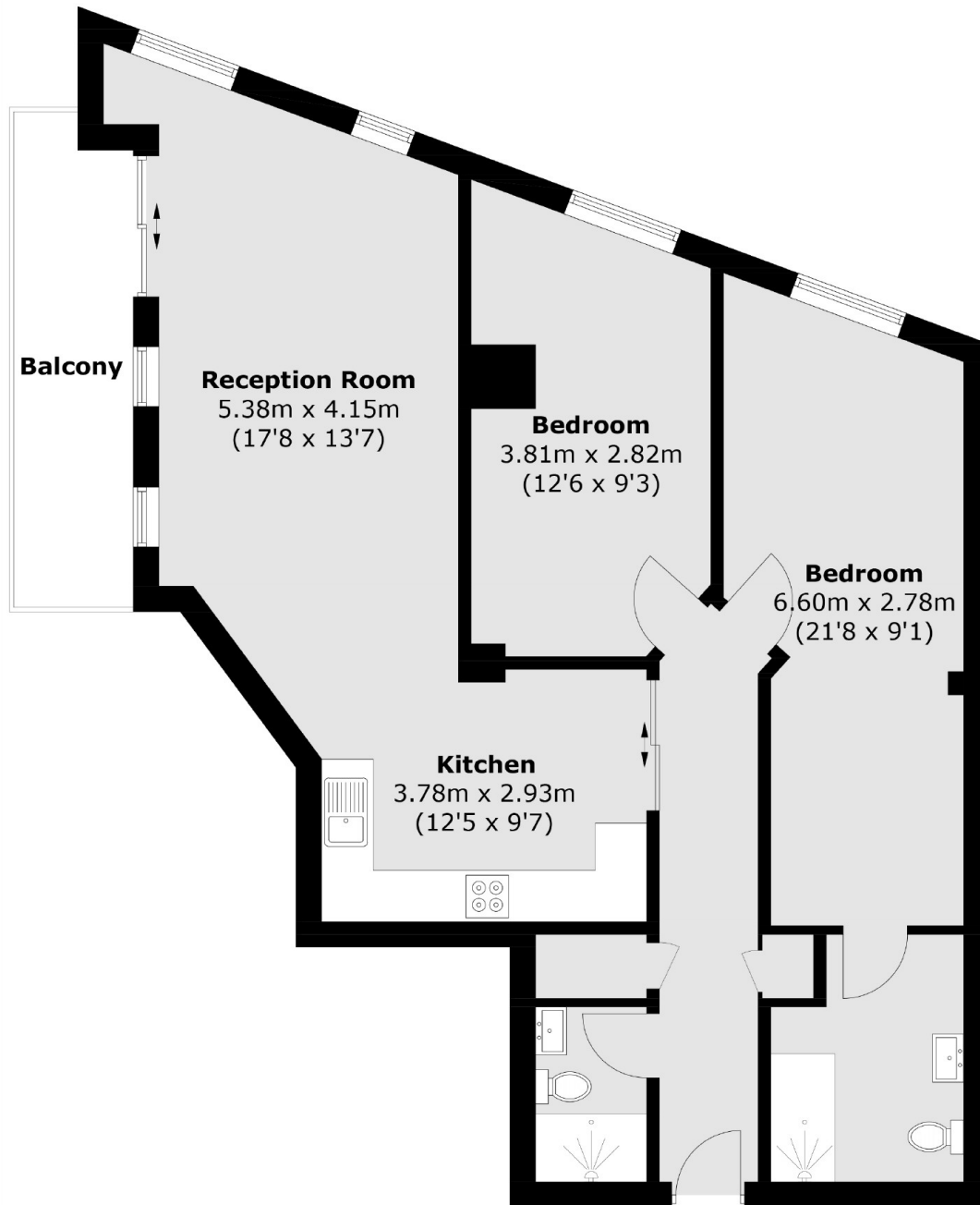
Offering 949 Sq.Ft of ample living space and refurbished throughout is this two bedroom home located in central Wapping. Features to include private balcony facing the court yard, re-fitted kitchen, re-fitted bathrooms, concierge service and two communal roof terraces offering spectacular views out across the city.

Gun Place is one of Wapping's most historic warehouse conversions, located close to Wapping Overground station and ideally placed for river fronted pubs and restaurants.

Features

Guide Price £675,000- £700,000
949.9 Sq.Ft
83.9 Sq.Ft Balcony
Central Wapping
Concierge Service
Re-Fitted Bathrooms
Private Balcony

Wapping Lane,
London, E1W



Total area (approx.): 88.2 sq. m (949.4 sq. ft)
Balcony area (approx.): 7.8 sq. m (83.9 sq. ft)