



Cobblestone Square, E1W
£850,000

Dexters



Cobblestone Square, E1W

Located on the 12th floor and offering stunning views of Canary Wharf, Shadwell Basin and Tower Bridge is this modern two bedroom apartment. Features to include floor to ceiling windows, open plan reception, two balconies, on-site gym, spa, cinema and concierge service.

Park Vista is the ideal development for those wanting a modern home in a historic location. The development offers residents spa facilities as well as gym, cinema room and concierge service.

This apartment is located on the 12th floor and offers unrivalled views of Canary Wharf, Shadwell Basin and Tower Bridge. Park Vista is also walking distance to St Katherine Docks and Tower Hill.

Park Vista is situated on Cobblestone Square approx 10 minutes walk from Wapping overground station and a further 5 minutes walk from Shadwell DLR and overground Station.

Features

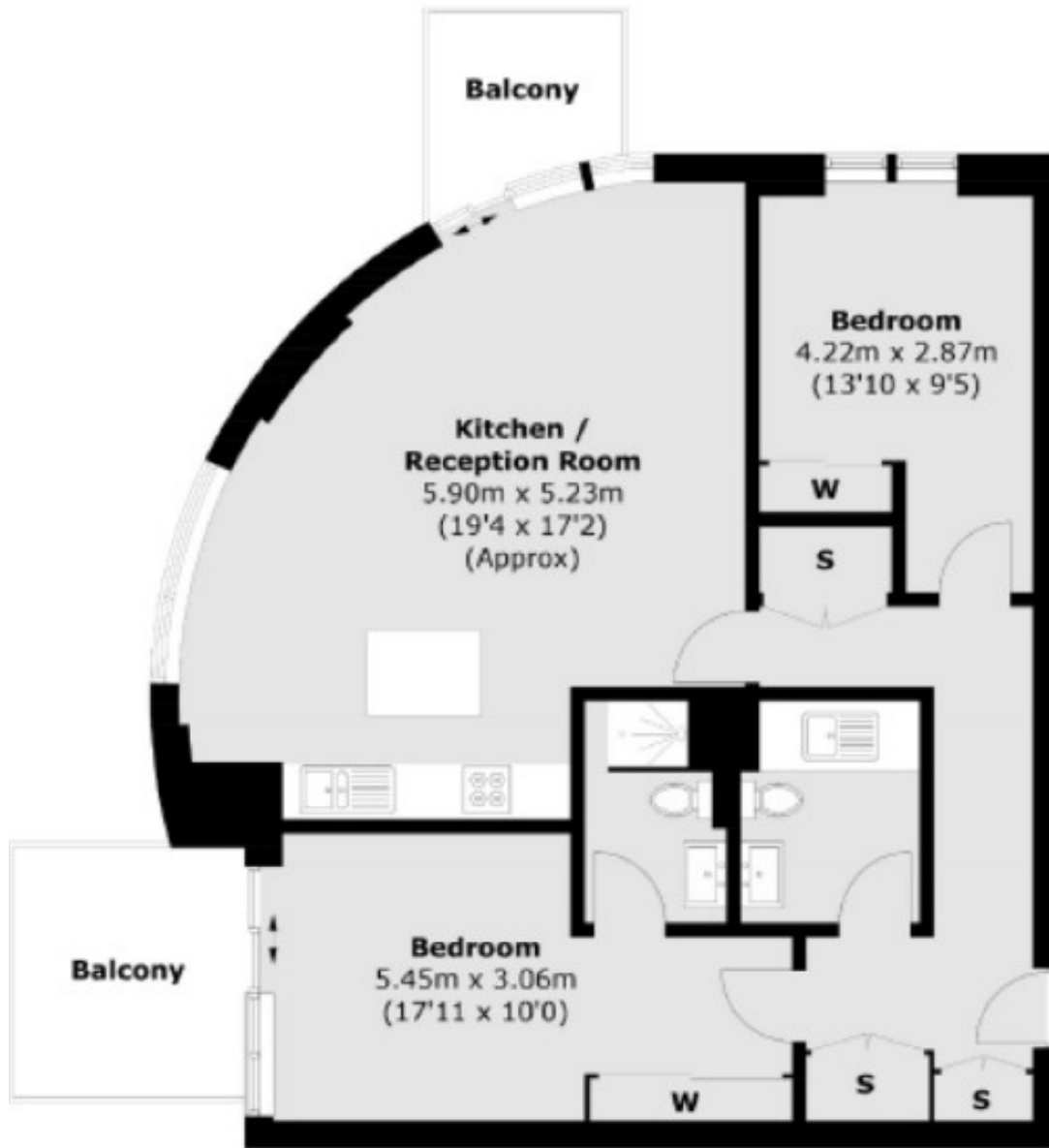
- 861.1 Sq.Ft
- Two Bathrooms
- Twelfth Floor
- Stunning views
- Concierge and Leisure Facilities







Cobblestone Square,
London, E1W



Twelfth Floor

Total area (approx.): 80.0 sq. m (861.1 sq. ft)
Balconies Area: 10.2 sq. m (109.7 sq. ft)