



Spencer Way, E1 £425,000

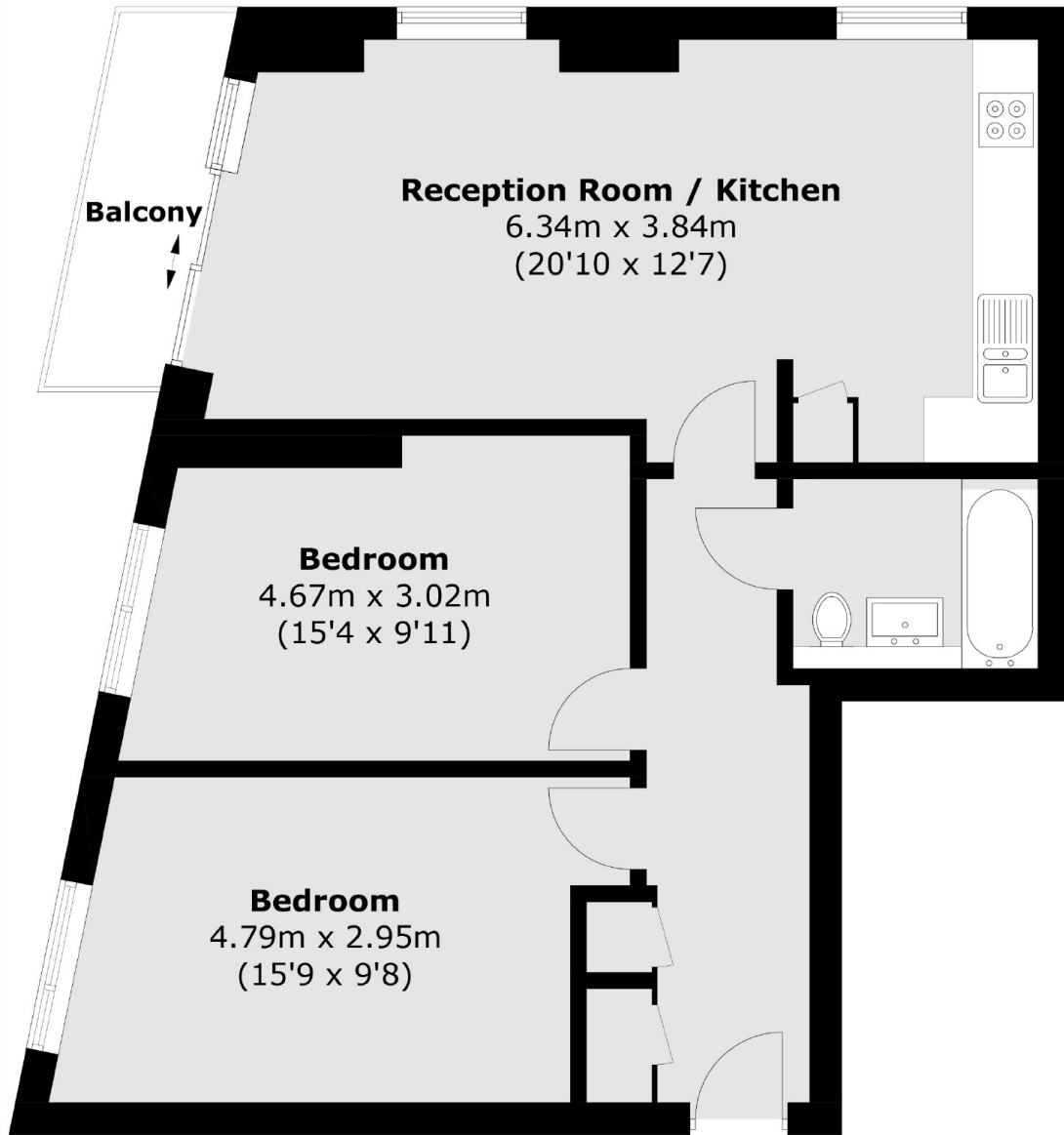
Offered to the market is this two bedroom, one bathroom property located on the ninth floor in this private development in E1. The property comprises two double bedrooms, one bathroom and a spacious open plan kitchen living space. Other benefits are; porter on site, lift access, close to transport.

Kelday Heights is located under 0.1 mile away from Shadwell Overground and DLR Station and is under a mile to the vibrant Brick Lane, where you have an array of café, bars and restaurants.

Features

Guide Price-£425,000-
£450,000
Chain Free
Close to Transport
Two Double Bedrooms
Lift Access
Concierge/Porter

Spencer Way,
London, E1



Ninth Floor

Total area (approx.): 71.4 sq. m (768.5 sq. ft)