



Watts Street, E1W

£525,000

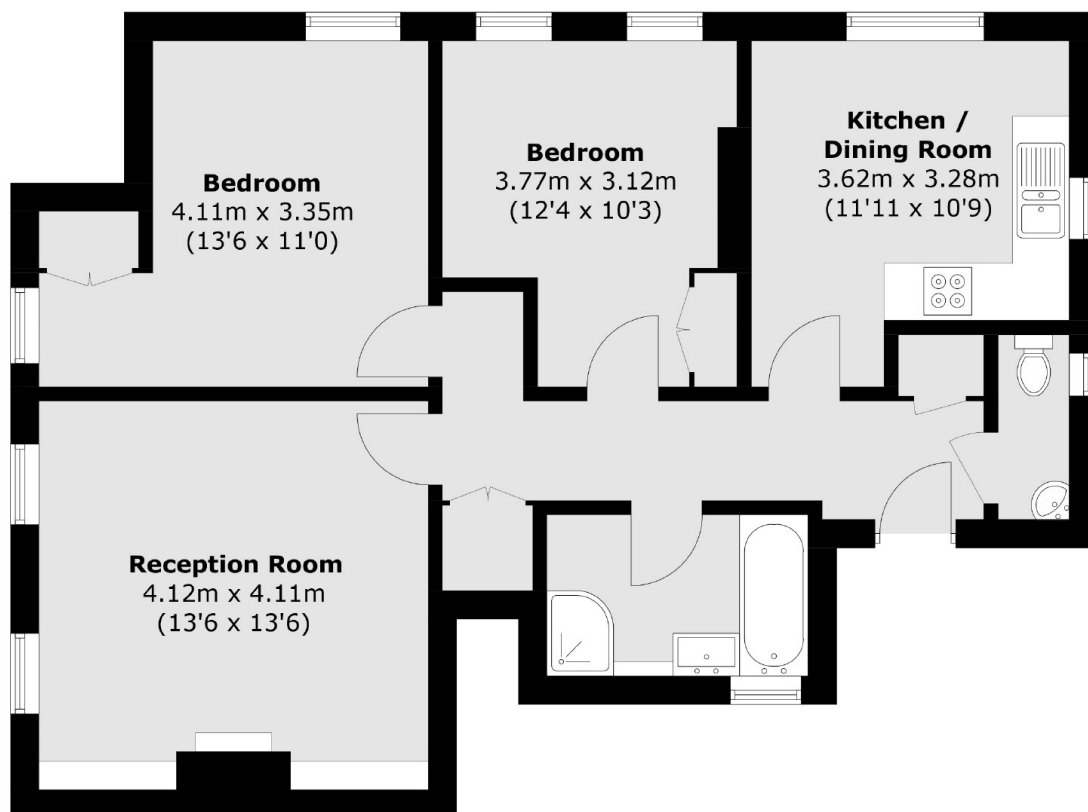
Offering 752 Sq.Ft of ample living space is this is this two double home located within the Wapping Green Bank. Features to include wooden flooring, duel aspect kitchen/dining room, re-fitted bathroom with bath and shower, low ground rent and newly extended lease.

Jackman House is 0.1 mile from Wapping Overground Station which provides good links to the Jubilee Line and The City. Sainsburys Local and various river fronted pubs are also on your door step.

Features

1920's Mansion Block
First Floor
752 Sq.Ft
Two Double Bedrooms
Re-Fitted Bathroom
Lease Extended

Watts Street,
London, E1W



Total area (approx.): 69.9 sq. m (752.3 sq. ft)