



Artichoke Hill, E1W

£325,000

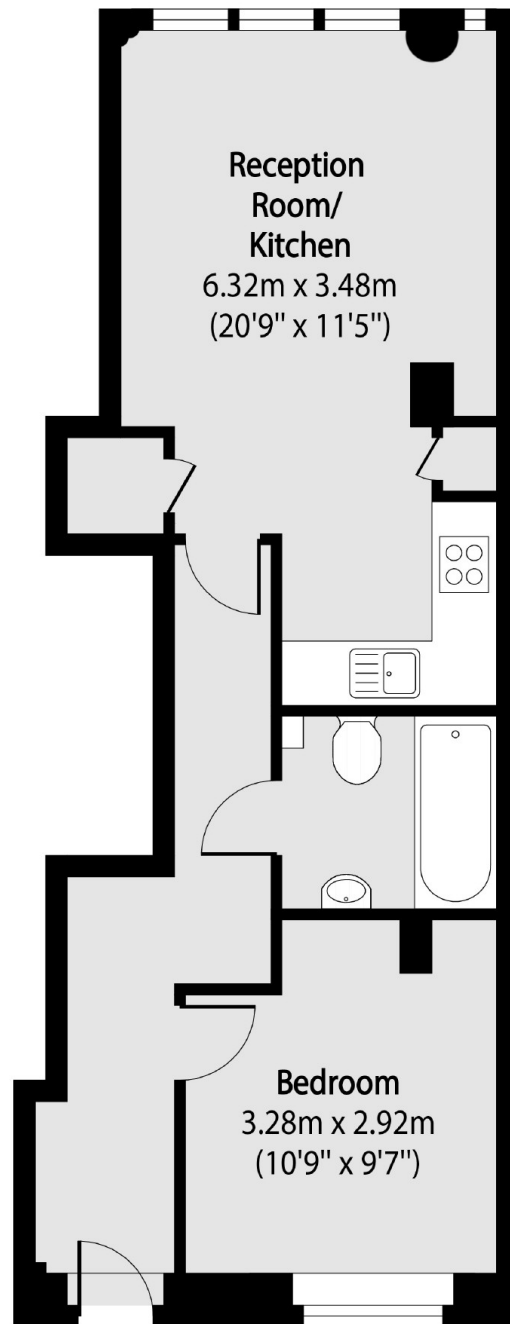
A one bedroom home located in West Wapping offered to the market on a chain free basis. Features to include open plan reception, gated access, entry phone system and lift.

Artichoke Hill is close to Tower Hill Station and Shadwell DLR with Aldgate and Aldgate East Tube just a little further but still within easy walking distance.

Features

452 Sq.Ft
Open Plan Reception
Gated Development
West Wapping Location
900+ Year Lease
Offers in excess of £325,000

Artichoke Hill,
London, E1W



Total area (approx): 42.01 sq m (452 sq. ft)